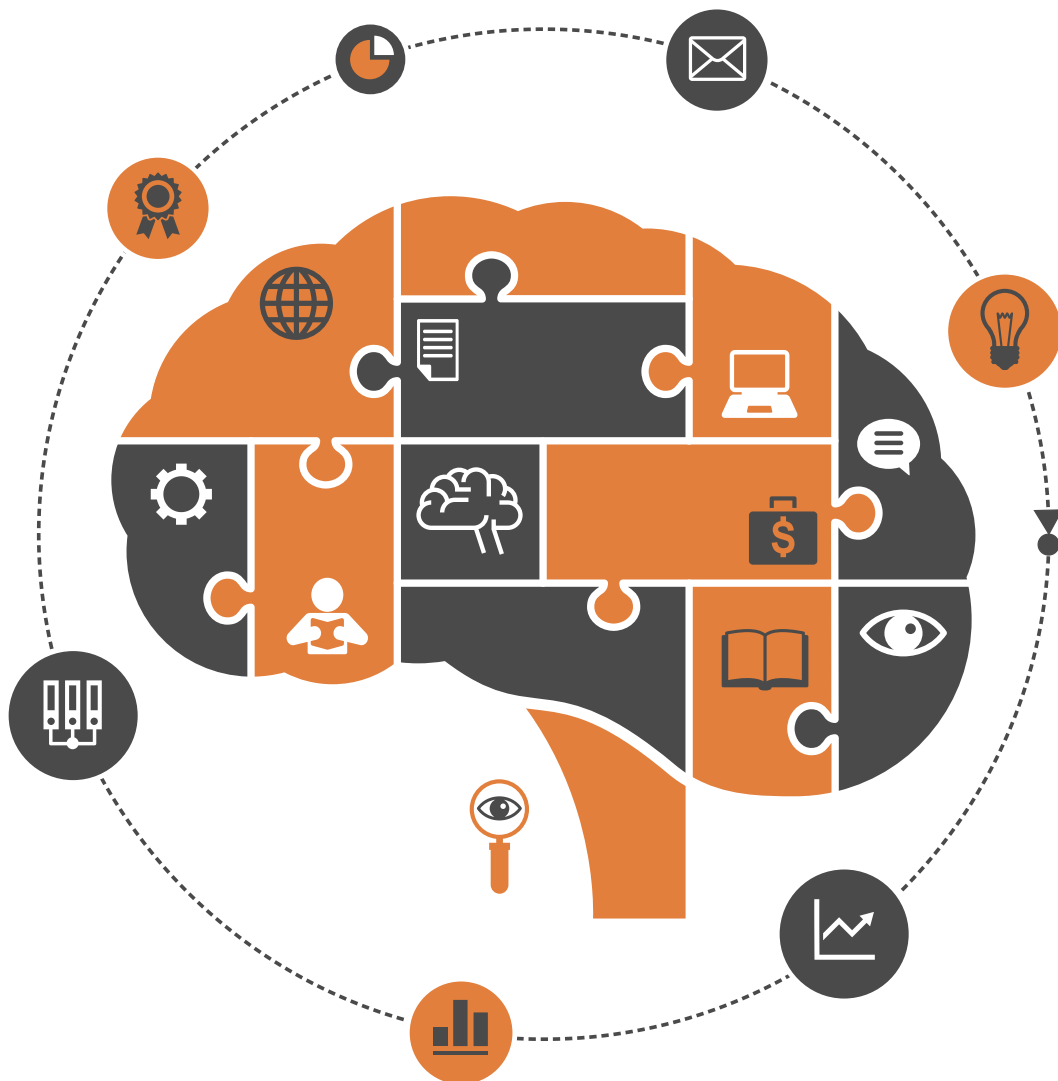


ISSN: 2152-7180

Volume 13, Number 7, July 2022



Psychology



ISSN: 2152-7180



9 772152 718003 07

<https://www.scirp.org/journal/psych>

Journal Editorial Board

ISSN Print: 2152-7180 ISSN Online: 2152-7199

<https://www.scirp.org/journal/psych>

Editorial Board

| | |
|--|--|
| Dr. Ruggero Andrisano-Ruggieri | University of Salerno, Italy |
| Dr. Margarita Bakracheva | Sofia University St. Kliment Ohridski, Bulgaria |
| Dr. Yoram Bar-Tal | Tel-Aviv University, Israel |
| Prof. Adital Ben-Ari | University of Haifa, Israel |
| Prof. Sefa Bulut | Ibn Haldun University, Turkey |
| Dr. Mento Carmela | University of Messina, Italy |
| Prof. Giuliana Galli Carminati | International Institute for Psychoanalysis Charles Baudouin, Switzerland |
| Prof. M. Diane Clark | Lamar University, USA |
| Prof. Sonali De | University of Calcutta, India |
| Prof. María Leticia Bautista Díaz | National Autonomous University of Mexico, Mexico |
| Dr. Thomas Vincent Frederick | California Baptist University, USA |
| Dr. Michael Galanakis | Hellenic Open University, Greece |
| Dr. Florim Gallopeni | Heimerer College, Albania |
| Prof. George Kyriacou Georgiou | University of Alberta, Canada |
| Dr. Hong Jiao | University of Maryland, USA |
| Dr. Michelle Y. Kibby | Southern Illinois University, USA |
| Prof. Kenneth A. Kiewra | University of Nebraska-Lincoln, USA |
| Prof. Beth Kurtz-Costes | University of North Carolina, USA |
| Prof. Giovanni Laviola | Italian National Institute of Health, Italy |
| Prof. Yang Lee | Gyeongsang National University, South Korea |
| Dr. Katerina Maniadaki | Technological Educational Institution, Greece |
| Dr. James M. McKivigan | Touro University Nevada, USA |
| Prof. Tim F. McLaughlin | Gonzaga University, USA |
| Dr. Melodee Mograss | McGill University, Canada |
| Prof. Ora Nakash | Smith College, Israel |
| Dr. Raffaella Nori | University of Bologna, Italy |
| Dr. Jennifer Kim Plybon Penberthy | University of Virginia School of Medicine, USA |
| Dr. Andrea Peru | University of Firenze, Italy |
| Dr. So-Jung Seo | Kyung Hee University, South Korea |
| Prof. Hanaa A. M. Shuwaikh | Fayoum University, Egypt |
| Dr. Luísa Soares | University of Madeira, Portugal |
| Dr. Soyibjon Tajibaev | Uzbek State University, Uzbekistan |
| Prof. Tuomo Antero Takala | University of Jyväskylä, Finland |
| Dr. Kasım Tatlıoğlu | Bingol University, Turkey |
| Dr. Svetlana Usca | Rezekne Academy of Technologies, Latvia |
| Prof. Massimiliano Versace | Boston University, USA |
| Prof. Edda Weigand | University of Münster, Germany |
| Dr. Patricia Gail Williams | University of Louisville, USA |
| Dr. Hui-Ching Wu | National Taiwan University, Chinese Taipei |
| Prof. Wengang Yin | Chinese Academy of Sciences, China |
| Prof. Samah Khaled Zahran | Women College, Ain Shams University, Egypt |

Table of Contents

Volume 13 Number 7

July 2022

The Clinical Application of a Positive Psychology Intervention Program—PEACE in Patients after Left Ventricular Assist Device Implementation

K. Kanellakis, E. Karakasidou, A. Papadimitriou, I. Voutoufianaki, A. Stalikas.....951

Asperger’s Syndrome, Obsessive-Compulsive Disorder and Attention Deficit Comorbidity

G. G. Carminati, F. Carminati, G. Zecca, C. Zecca-Tagan.....964

Exploring the Relationship between Reading Comprehension and Text Genres in Fifth and Sixth Grade

Z. Krokou.....979

High School Teachers Describe Growth Mindset Related to Teaching Pedagogy and Students’ Academic Achievement

K. G. D. Schnorr.....994

The Differences in Attitudes towards Sexuality between Religious and Secular Therapists as a Result of Participation in an Intervention Supervision Program

N. Shafrir, D. Balahur.....1009

The Effectiveness of an Intervention Program for the Development of Social and Emotional Capacities of Children with a Hearing Impairment

E. Sammari, A. Naceur.....1025

Referrers Perceptions of the Autistic Presentation: A Content Analysis

M. Adamou, T. Fullen, K. Abbott, N. Galab.....1063

Pandemic Stress from COVID-19: Psychosomatic Support for New Forms of Adaptation

S. Cagiada, F. Caiella, G. De Mori, M. Farinelli, A. Minervino, R. Pizzi.....1081

A Mini Review between Self-Other-Control and Empathy

Q. Sun, L. Chen, Y. H. Dong.....1115

Psychology (PSYCH)

Journal Information

SUBSCRIPTIONS

The *Psychology* (Online at Scientific Research Publishing, <https://www.scirp.org/>) is published monthly by Scientific Research Publishing, Inc., USA.

Subscription rates:

Print: \$89 per issue.

To subscribe, please contact Journals Subscriptions Department, E-mail: sub@scirp.org

SERVICES

Advertisements

Advertisement Sales Department, E-mail: service@scirp.org

Reprints (minimum quantity 100 copies)

Reprints Co-ordinator, Scientific Research Publishing, Inc., USA.

E-mail: sub@scirp.org

COPYRIGHT

Copyright and reuse rights for the front matter of the journal:

Copyright © 2022 by Scientific Research Publishing Inc.

This work is licensed under the Creative Commons Attribution International License (CC BY).

<http://creativecommons.org/licenses/by/4.0/>

Copyright for individual papers of the journal:

Copyright © 2022 by author(s) and Scientific Research Publishing Inc.

Reuse rights for individual papers:

Note: At SCIRP authors can choose between CC BY and CC BY-NC. Please consult each paper for its reuse rights.

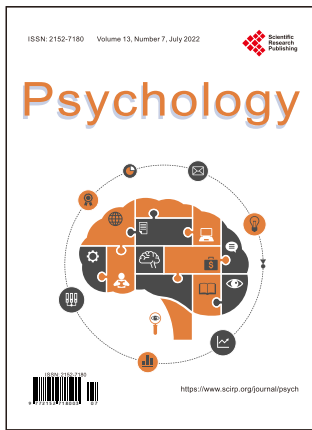
Disclaimer of liability

Statements and opinions expressed in the articles and communications are those of the individual contributors and not the statements and opinion of Scientific Research Publishing, Inc. We assume no responsibility or liability for any damage or injury to persons or property arising out of the use of any materials, instructions, methods or ideas contained herein. We expressly disclaim any implied warranties of merchantability or fitness for a particular purpose. If expert assistance is required, the services of a competent professional person should be sought.

PRODUCTION INFORMATION

For manuscripts that have been accepted for publication, please contact:

E-mail: psych@scirp.org



Call for Papers

Psychology (PSYCH)

ISSN Print: 2152-7180 ISSN Online: 2152-7199

<https://www.scirp.org/journal/psych>

PSYCH is an international refereed journal dedicated to the latest advancement of Psychology. The goal of this journal is to keep a record of the state-of-the-art research and promote the research work in these fast moving areas.

Subject Coverage

This journal invites original research and review papers that address the following issues in Psychology. Topics of interest include, but are not limited to:

| | |
|--|--|
| Anomalistic Psychology | Military Psychology |
| Behavioral Psychology | National Psychology |
| Biological Basis of Behavior | Neuropsychology |
| Clinical Psychology | Others |
| Cognitive Psychology | Political Psychology |
| Counseling Psychology | Professional Practice |
| Cultural Psychology | Psychological Assessment and Evaluation |
| Economic Psychology | Psychology of Art |
| Educational Psychology | Psychology of Religion |
| Engineering Psychology | Psychotherapy |
| Environmental Psychology | Safety Psychology |
| Ethics in Psychology | School Psychology |
| Family Psychology and Couples Psychology | Scientific Psychology |
| Forensic Psychology | Social Psychology |
| Gerontology | Sport Psychology |
| Health Psychology | Traffic Psychology |
| Intelligence Psychology | Work, Industrial and Organizational Psychology |
| Managerial and Leadership Psychology | |

We are also interested in short papers (letters) that clearly address a specific problem, and short survey or position papers that sketch the results or problems on a specific topic. Authors of selected short papers would be invited to write a regular paper on the same topic for future issues of the **PSYCH**.

Notes for Intending Authors

Submitted papers should not have been previously published nor be currently under consideration for publication elsewhere. Paper submission will be handled electronically through the website. All papers are refereed through a peer review process. For more details about the submissions, please access the website.

Website and E-Mail

<https://www.scirp.org/journal/psych>

E-mail: psych@scirp.org

What is SCIRP?

Scientific Research Publishing (SCIRP) is one of the largest Open Access journal publishers. It is currently publishing more than 200 open access, online, peer-reviewed journals covering a wide range of academic disciplines. SCIRP serves the worldwide academic communities and contributes to the progress and application of science with its publication.

What is Open Access?

All original research papers published by SCIRP are made freely and permanently accessible online immediately upon publication. To be able to provide open access journals, SCIRP defrays operation costs from authors and subscription charges only for its printed version. Open access publishing allows an immediate, worldwide, barrier-free, open access to the full text of research papers, which is in the best interests of the scientific community.

- High visibility for maximum global exposure with open access publishing model
- Rigorous peer review of research papers
- Prompt faster publication with less cost
- Guaranteed targeted, multidisciplinary audience



**Scientific
Research
Publishing**

Website: <https://www.scirp.org>

Subscription: sub@scirp.org

Advertisement: service@scirp.org