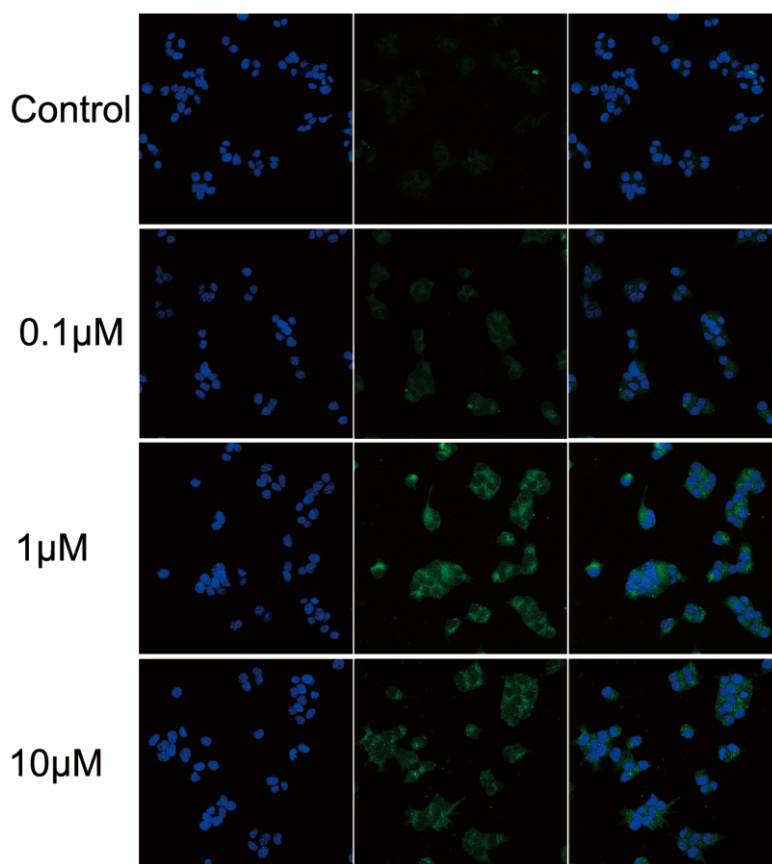


Journal of Diabetes Mellitus



ISSN: 2160-5831



Journal Editorial Board

ISSN Print: 2160-5831 ISSN Online: 2160-5858

<http://www.scirp.org/journal/jdm/>

Editor-in-Chief

Prof. Sharma S. Prabhakar

Texas Tech University Health Sciences Center, USA

Editorial Board

Dr. Intekhab Ahmed

Thomas Jefferson University, USA

Prof. Bahram H. Arjmandi

Florida State University, USA

Prof. David A. Arnall

East Tennessee State University, USA

Dr. Vivek Bhalla

Stanford University, USA

Prof. Bertrand Cariou

Nantes University Hospital, France

Prof. Dmitry A. Chistyakov

Pirogov Russian State Medical University, Russia

Prof. Fernando Cordido

University of A Coruña, Spain

Prof. Franco Battista Ennio Folli

University of Texas, USA

Prof. Paul Albert Fournier

The University of Western Australia, Australia

Dr. Bruce H. Francis

Novartis Pharmaceuticals Corporation, USA

Dr. Xianxin Hua

University of Pennsylvania, USA

Dr. Hongyun Lu

The Fifth Affiliated Hospital of Sun Yat-sen University, China

Dr. Abbas Ali Mansour

Basrah College of Medicine, Iraq

Dr. Felicia V. Nowak

Ohio University, USA

Prof. Kazushi Okamoto

Aichi Prefectural College of Nursing & Health, Japan

Prof. Fernando Ovalle

University of Alabama, USA

Prof. Teresa Quattrin

State University of New York, USA

Prof. Satyan M. Rajbhandari

Chorley & South Ribble Hospital, UK

Dr. Eduardo J. Spinedi

Neuroendocrine Unit, Argentina

Dr. G. R. Sridhar

Andhra University, India

Dr. Abraham Thomas

Henry Ford Hospital, USA

TABLE OF CONTENTS

Volume 3, Number 3, August 2013

12/15-Lipoxygenase inhibition counteracts MAPK phosphorylation in mouse and cell culture models of diabetic peripheral neuropathy	
R. Stavniichuk, A. A. Obrosova, V. R. Drel, J. L. Nadler, I. G. Obrosova, M. A. Yorek.....	101
The antihyperglycemic effect of <i>Bridelia ndellensis</i> ethanol extract and its fractions is mediated by an insulinotropic action	
S. D. Sokeng, B. Rokeya, J. M. A. Hannan, L. Ali, P. Kamtchouing.....	111
The effect of demethylasterriquinone B-1 on insulin secretion in rat pancreas	
M.-C. Lai, Y.-S. Lo, C. Yang.....	116
Autophagy induced by glibenclamide serves as a defense against apoptosis in INS-1 rat insulinoma cells	
H. Su, X. Y. Liu, L. Su, L. Zhang, X. G. Liu, H. Ji, H. Q. Rong.....	122
Comparative efficacy between glimepiride and metformin in preventing progression of prediabetes to type 2 diabetes	
U. M. Kabadi.....	129
Addition of Metanx in pregabalin partial responders for painful diabetic neuropathy	
A. M. Jacobs, D. L. Cheng.....	134
Family responsibility dynamics for young adults in transition to adult health care	
P. Rapley, G. Babel, J. Kaye, S. Brown.....	139
Prevalence of microalbuminuria in type 2 diabetes patients in Tirana, a preliminary multicenter study	
N. Pasko, F. Toti, E. Zekollari, A. Strakosha, V. Kacori, N. Thereska.....	145
Importance of regional differences in the features of type 2 diabetes mellitus in one and the same country—The example of Thailand	
S. Srivanichakorn, T. Yana, P. Sanchaisuriya, Y. Y. Maw, F. P. Schelp.....	150
Immunosuppressive therapy in pancreas and islet transplant: Need for simultaneous assessment of insulin sensitivity and secretion	
S. Benedini, A. Caumo, I. Terruzzi, L. Luzi.....	156

The figure on the front cover is from the article published in Journal of Diabetes Mellitus, 2013, Vol. 3, No. 3, pp. 122-128 by Hua Su, *et al.*

Journal of Diabetes Mellitus (JDM)

Journal Information

SUBSCRIPTIONS

The *Journal of Diabetes Mellitus* (Online at Scientific Research Publishing, www.SciRP.org) is published quarterly by Scientific Research Publishing, Inc., USA.

Subscription rates:

Print: \$59 per issue.

To subscribe, please contact Journals Subscriptions Department, E-mail: sub@scirp.org

SERVICES

Advertisements

Advertisement Sales Department, E-mail: service@scirp.org

Reprints (minimum quantity 100 copies)

Reprints Co-ordinator, Scientific Research Publishing, Inc., USA.

E-mail: sub@scirp.org

COPYRIGHT

Copyright©2013 Scientific Research Publishing, Inc.

All Rights Reserved. No part of this publication may be reproduced, stored in a retrieval system, or transmitted, in any form or by any means, electronic, mechanical, photocopying, recording, scanning or otherwise, except as described below, without the permission in writing of the Publisher.

Copying of articles is not permitted except for personal and internal use, to the extent permitted by national copyright law, or under the terms of a license issued by the national Reproduction Rights Organization.

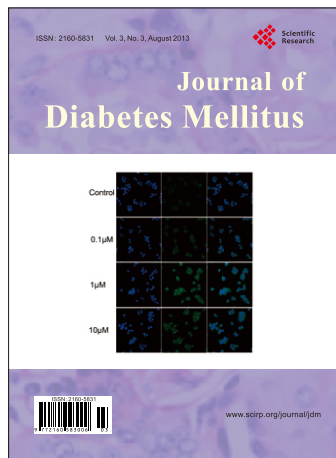
Requests for permission for other kinds of copying, such as copying for general distribution, for advertising or promotional purposes, for creating new collective works or for resale, and other enquiries should be addressed to the Publisher.

Statements and opinions expressed in the articles and communications are those of the individual contributors and not the statements and opinion of Scientific Research Publishing, Inc. We assume no responsibility or liability for any damage or injury to persons or property arising out of the use of any materials, instructions, methods or ideas contained herein. We expressly disclaim any implied warranties of merchantability or fitness for a particular purpose. If expert assistance is required, the services of a competent professional person should be sought.

PRODUCTION INFORMATION

For manuscripts that have been accepted for publication, please contact:

E-mail: jdm@scirp.org



Journal of Diabetes Mellitus

ISSN: 2160-5831 (Print) ISSN: 2160-5858 (Online)

<http://www.scirp.org/journal/jdm>

JDM is an international journal dedicated to the current developments of Diabetes Mellitus, the broad scope will also include significant research in the fields of pathology and therapeutic innovations of diabetes itself, both type I and II.

Editor-in-Chief

Prof. Sharma S. Prabhakar

Texas Tech University Health Sciences Center, USA

Editorial Board

Dr. Intekhab Ahmed
 Prof. Bahram H. Arjmandi
 Prof. David A. Arnall
 Dr. Vivek Bhalla
 Prof. Bertrand Cariou
 Prof. Dmitry A. Chistyakov
 Prof. Fernando Cordido

Prof. Franco Battista Ennio Folli
 Prof. Paul Albert Fournier
 Dr. Bruce H. Francis
 Dr. Xianxin Hua
 Dr. Hongyun Lu
 Dr. Abbas Ali Mansour
 Dr. Felicia V. Nowak

Prof. Kazushi Okamoto
 Prof. Fernando Ovalle
 Prof. Teresa Quattrin
 Prof. Satyan M. Rajbhandari
 Dr. Eduardo J. Spinedi
 Dr. G. R. Sridhar
 Dr. Abraham Thomas

Subject Coverage

All manuscripts submitted to JDM must be previously unpublished and may not be considered for publication elsewhere at any time during review period. Additionally, accepted ones will immediately appear online followed by printed in hard copy. The journal publishes original papers including but not limited to the following fields:

- Cardiovascular Diabetology
- Diabetes and Its Complications
- Diabetes and Metabolic Syndrome
- Diabetes and Metabolism
- Diabetes Care
- Diabetes Education
- Diabetes in Developing Countries
- Diabetes Nursing
- Diabetes, Obesity and Metabolism
- Diabetes Research and Clinical Practice
- Diabetes Therapy
- Diabetic Medicine
- Diabetes & Vascular Disease
- Pancreatic Islet Function and Intermediary Metabolism
- Pathogenesis of Diabetes
- Pediatric Diabetes
- Pharmacological Mechanisms of Drug and Hormone Action
- Primary Care Diabetes
- Therapies for Diabetic Complications

We are also interested in short papers (letters) that clearly address a specific problem, and short survey or position papers that sketch the results or problems on a specific topic. Authors of selected short papers would be invited to write a regular paper on the same topic for future issues of the *JDM*.

Notes for Intending Authors

Submitted papers should not have been previously published nor be currently under consideration for publication elsewhere. Paper submission will be handled electronically through the website. All papers are refereed through a peer review process. Authors are responsible for having their papers checked for style and grammar prior to submission to JDM. For more details about the submissions, please access the website.

Website and E-Mail

<http://www.scirp.org/journal/jdm>

E-mail: jdm@scirp.org