

Transcranial Direct Current Stimulation: Effects on Motor and Non-Motor Symptoms of Parkinson's Disease

Fayda Protásio¹ , Carlos Alberto Bezerra Tomaz² , Joaquim Brasil-Neto³ ,
Pedro Brandão¹ , Nasser Allam⁴ , Maria Clotilde Henriques Tavares^{1*} 

¹Laboratory of Neuroscience and Behavior, Department of Physiological Sciences, Institute of Biology, University of Brasília, Brasília, Brazil

²Master Program in Environment, University CEUMA, São Luís, MA, and Faculty of Medicine, Euro-American University Center-UNIEURO, Brasília, Brazil

³Faculty of Medicine, Euro-American University Center-UNIEURO, Brasília, Brazil

⁴NA Neurologistas Associados, Brasília, Brazil

Email: faydaprotasio@gmail.com, ctomaz@ceuma.br, joaquim.neto@unieuro.edu.br, pedrobrandao.neurologia@gmail.com, nasserallam@uol.com.br, *mchtavares@gmail.com

How to cite this paper: Protásio, F., Tomaz, C.A.B., Brasil-Neto, J., Brandão, P., Allam, N. and Tavares, M.C.H. (2024) Transcranial Direct Current Stimulation: Effects on Motor and Non-Motor Symptoms of Parkinson's Disease. *Journal of Behavioral and Brain Science*, **14**, 135-160. <https://doi.org/10.4236/jbbs.2024.145010>

Received: May 6, 2024

Accepted: May 28, 2024

Published: May 31, 2024

Copyright © 2024 by author(s) and Scientific Research Publishing Inc.

This work is licensed under the Creative Commons Attribution International License (CC BY 4.0).

<http://creativecommons.org/licenses/by/4.0/>



Open Access

Abstract

Introduction: In the last thirty years, brain neuromodulation techniques have been used as an alternative to pharmacological treatment of neurological disorders. Parkinson's disease (PD) is a neurodegenerative disorder leading to bradykinesia, rest tremor, postural changes, and non-motor symptoms such as depression, anxiety, sleep disorders, pain, and cognitive decline that compromises executive functions (EFs), responsible for the orderly execution of behaviors and tasks of daily life and intentional and directed actions. To this date, a few studies with transcranial direct current stimulation (tDCS) have shown beneficial effects in PD patients concerning specific motor and non-motor symptoms, targeting the motor cortex and/or prefrontal regions. **Objective:** The main objective of this study was to evaluate the effects of left prefrontal tDCS across a broad spectrum of motor and non-motor symptoms of PD using established validated scales. **Method:** Single-blind randomized clinical trial with 18 volunteers with PD, aged between 45 and 80 years (66.1 ± 9.65), who met inclusion and exclusion criteria. Participants were submitted to assessments of motor and non-motor functions employing psychometric scales and tests to evaluate EFs and were randomly divided into two groups: control (sham stimulation) and experimental (active stimulation). All participants were involved in three separate tDCS sessions. The anode was positioned over the left dorsolateral prefrontal cortex and the cathode over

*Corresponding author.

the right supraorbital region, with a direct current intensity of 2 mA, lasting 20 minutes. At the end of the three sessions, all participants were reassessed. **Results:** Significant effects of tDCS on non-motor functions were observed for cognition (verbal fluency of actions, clock copy test, appointment by visual confrontation, and verbal memory with immediate free recall) and subjective assessment of sleep quality (overall restlessness and discomfort in the arms and legs at night, leg and arm cramps at night and distressing dreams). There was also an improvement in the rate of errors and successes for congruent and incongruent stimuli of the Stroop Test. The beneficial effects on motor function were decreased rigidity, improved gait, and greater agility in the finger-tapping test. **Conclusion:** Three tDCS sessions showed positive results for participants with PD, producing significant improvements in various motor and non-motor functions, including sleep quality, cognition, and EFs. Additionally, the present results indicate that tDCS neuromodulation of the left dorsolateral prefrontal cortex region is feasible, safe, and provides significant objective benefits for PD patients.

Keywords

Parkinson's Disease, Neuromodulation, Transcranial Direct Current Stimulation—tDCS, Movement Disorders, Mood, Sleep, Cognition

1. Introduction

Transcranial direct current stimulation (tDCS) is a non-invasive neuromodulation technique that allows neuronal plasticity through the delivery of a low-intensity positive (anodal) or negative (cathodal) electric current employing electrodes positioned in a previously established area, leading to changes in neuronal resting membrane potential [1]. Several published studies describe tDCS effects on stimulation or inhibition of the synaptic transmission between neurons. tDCS can be combined with training of cognitive or motor skills to evaluate an improvement in the performance of some tasks. It has also been proposed as a technique with therapeutic effects in clinical protocols for different diseases, including Parkinson's disease [2] [3] [4].

Parkinson's disease (PD) is a neurodegenerative disorder with a progressive loss of dopaminergic neurons, especially those located in the midbrain [5]. In addition to a dopaminergic deficit, the pathogenesis of PD has also been explained by mitochondrial and lysosomal dysfunction, together with alpha-synuclein deposits. These deposits relate to neuronal death in multiple nervous system nuclei, which may explain diverse PD-specific non-motor symptoms [6].

The cardinal signs of PD are mainly of motor nature: bradykinesia, rest tremor, postural changes, and muscular rigidity. However, the non-motor symptoms also require specialized treatment due to the significant impact on quality of life. These include olfactory changes, sleep disorders, postural hypotension, constipation, depression, anxiety, psychosis, and cognitive impairment [6].

Despite the impossibility of ascertaining the etiology of PD, some theories ex-

plain the degenerative process in terms of impairment of the affected neurological structures (7). In this context, PD can be described by its stages, as comprising three main phases: Initially, the premotor phase is characterized by the death of neurons of the lower brainstem (causing sleep disturbance symptoms), progressing through the olfactory bulb (emergence of hyposmia) and the pontine nuclei [6]. Then, in the motor phase, the mesencephalic region is affected (motor symptoms). In the advanced stage, the neuronal deterioration affects the cerebral cortex, impaired impairment cognitive and behavioral functions. In this context, scientists call attention to non-motor predictive signs, which signal the beginning of the pathology and prodromal predictors, indicating the degree of neuronal involvement and prognosis of the disease [7].

To adequately characterize PD symptoms, physicians and researchers use assessment scales and tests that are validated and widely recognized. For instance, there are scales for the screening of signs and symptoms resulting from Parkinson's disease, such as the Hoehn & Yahr (H&Y) scale, specific for the degree of disease staging; the Unified Parkinson's Disease Rating Scale (UPDRS), which assesses various domains, including motor function. There is also the Parkinson's Disease Sleep Scale (PDSS), which identifies the occurrence of sleep disturbances [9], and the Hospital Anxiety and Depression Scale (HADS), a wide-ranging instrument for mood symptoms in PD [8] [9].

In addition, the Parkinson's Disease Cognitive Rating Scale (PD-CRS) is used to assess cognitive impairment and executive function deficits (EFs) [10]. Furthermore, the Stroop Test also provides information about the EFs by measuring the interference effect generated through the evaluation of congruent and incongruent stimuli consisting of color names written in either matching or non-matching colors and presented in pseudo-random order. The applicability of these tools and the Stroop Test for patients with Parkinson's Disease has been well described in the literature [11] [12] [13].

Previous studies have investigated the effects of tDCS on motor and non-motor symptoms. Concerning motor symptoms, Ishikuro *et al.* (2018) identified that anodal stimulation significantly increased scores of motor functions in the Fugl Meyer Assessment set and significantly decreased scores of motor disability in UPDRS-III compared with sham and cathodal stimulation. In another trial, the researchers verified that anodal tDCS improves patients' walking speed with or without concomitant physical therapy treatment [14].

Regarding the beneficial effects of tDCS on non-motor functions, a study conducted by a group of researchers in Iran showed significant results in the quality of sleep of participants with PD, as well as a decrease in their fatigue symptoms [15] [16]. Benusi and collaborators found that participants had a lower incidence of risky decision-making and displayed enhanced executive functions, inhibitory control, and cognitive flexibility. In Australia, a clinical trial with follow-up showed improvement in PD patients' cognition (language, global memory), and executive functions (working memory, cognitive flexibility), either with cognitive training or with tDCS alone [17] [18].

Doruk *et al.* identified significant results in the Trail Test after tDCS and found that the DLPFC-L group showed a greater reduction in Beck depression inventory scores [2]. It is also important to highlight that using tDCS for depression is common in clinical practice with an anode over the L-DLPFC and a cathode over the right supra-orbital region. The beneficial effects of tDCS have also been identified in other studies [11] [19].

Considering that Parkinson's disease is multi-causal and substantially compromises the patient's quality of life, studies that offer noninvasive and effective treatments for such symptoms are of great value and potentially relevant. In the present study, we investigate the effects of tDCS stimulation in patients with Parkinson's disease on motor function, sleep disorders, mood swings, cognition, and executive functions.

2. Material and Methods

2.1. Participants

The study sample included 18 patients, 11 men and 7 women, aged between 45 and 85 years, (mean 66.1 ± 9.65) all diagnosed with Parkinson's disease by a neurologist. The participants had preserved cognitive status with mild to moderate motor symptoms, according to the MDS-UPDRS-Part III scale. They had no history or current clinical diagnosis of cognitive decline and no legally imposed civil limitations. Inclusion criteria were: 1) diagnosis of Parkinson's disease according to the criteria of the London Brain Bank; 2) being under treatment with dopaminergic drugs with a stable total daily dose for at least 30 days; 3) being in the *on* phase and therefore able to more comfortably perform in all tests; 4) being able to read and understand instructions; 5) having more than 8 years of school education; 6) having preserved civil capacity as defined above; g) age between 45 and 85 years. As for the exclusion criteria, the following were considered: 1) any contraindication for transcranial stimulation, metallic brain implants near the region to be stimulated, or hypersensitivity to saline or other materials attached to the stimulator; 2) illiteracy or less than 8 years of school education; 3) history of psychosis, severe vascular diseases, head trauma, and epilepsy; 4) uncorrected severe visual or auditory impairment; 5) motor function impairment that hinders performance in the evaluation items that require it; 6) use of antipsychotics (dopaminergic blockers) or stimulant medications (such as modafinil or methylphenidate); 7) use of a pacemaker. The study was carried out in the Laboratory of Neuroscience and Behavior of the Institute of Biology at the University of Brasília and met the requirements of Resolution No. 466/2012 of the National Health Council, which provides ethical standards for research involving human subjects. The study protocol was reviewed and approved by the Research Ethics Committee of the Faculty of Health Sciences of the University of Brasília, under the number CAE: 91375218.9.0000.0030.

2.2. Pharmacotherapy for the Treatment of Parkinson's Disease (Table 1)

Table 1. Drugs used by the patients in this study.

Drugs for Parkinson's Disease therapy	F	%
Levodopa	18	100%
Amantadine	4	22.22%
Dopamine Agonists (DA)	12	66.66%
Pramipexole	10	55.55%
Rotigotine	2	11.11%
Monoamine Oxidase (MAO) B inhibitors	1	5.55%
Rasagiline	1	5.55%
Drugs for Parkinson's disease		
Amantadine + Prolopa BD + Prolopa HBS	1	5.56%
Pramipexole + Amantadine + Prolopa BD 100/25	1	5.56%
Pramipexole Amantadine + Prolopa BD 100/25 + Prolopa HBS	1	5.56%
Pramipexole + Levodopa	1	5.56%
Pramipexole Prolopa + Prolopa BD	1	5.56%
Pramipexole + Prolopa + Prolopa BD + Prolopa HBS	1	5.56%
Pramipexole + Prolopa BD	3	16.67%
Pramipexole + Prolopa BD + Prolopa HBS 100/25	1	5.56%
Prolopa	1	5.56%
Prolopa + Prolopa BD	1	5.56%
Prolopa + Prolopa DR	1	5.56%
Prolopa + Prolopa HBS 100/25	1	5.56%
Prolopa HBS + Prolopa DR	1	5.56%
Rasagiline + Prolopa BD100/25 + Prolopa HBS 100/25	1	5.56%
Rotigotine + Amantadine + Prolopa BD	1	5.56%
Rotigotine + Prolopa	1	5.56%
Total	18	100.00%

Regarding other drugs taken by the volunteers for the treatment of comorbidities, 44.8% were antidepressants, 22.4% were anticholinergics, sedatives and/or antihypertensives, 16.1% of the individuals took other drugs of continuous use, such as antidiabetic, neuroleptic, antidyspeptic, antifungal, and anti-inflammatory preparations. On the other hand, 11.1% of the participants used statins or did not use any medication. The distribution of these medications and their frequency by prescription of the participants (**Table 2**).

2.3. Experimental Protocol

The study was single-blinded since the trained scorer was also involved in the

Table 2. Description of the sample according to drug treatment of comorbidities.

Other drugs for comorbidities	F	%
Does not use other medications	2	11.11%
Antidepressants		
Mirtazapine	1	5.56%
Antidepressants + antihypertensive + Antidiabetic + Antidyslipidemic		
Sertraline + Losartan + Metformin + Simvastatin	1	5.56%
Antidepressants + Neuroleptic		
Venlafaxine + Quetiapine	1	5.56%
Antidepressants + Sedative		
Mirtazapine + Alprazolam	1	5.56%
Antidepressants + Sedative + Anticholinergic		
Sertraline + Alprazolam + Tamsulosin	1	5.56%
Antifungal + Anticholinergic		
Fluconazole + Biperiden	1	5.56%
Antihypertensive		
Valsartan	1	5.56%
Antihypertensive + Antidepressants + Antidyslipidemic		
Hydrochlorothiazide + Amitriptyline + Simvastatin	1	5.56%
Antihypertensive + Antidiabetic		
Enalapril + Metformin	1	5.56%
Antidyslipidemic + Anticholinergic + Anticholinergic		
Rosuvastatin + Atropine + Tamsulosin	1	5.56%
Hormone + Sedative + Bisphosphonate		
Levothyroxine + Alprazolam + Alendronate Sodium	1	5.56%
Hormone		
Melatonin	1	5.56%
Anti Dyspeptic + Anti-inflammatory		
Omeprazole + Diclofenac Sodium + Paracetamol	1	5.56%
Sedative		
Clonazepam	2	11.11%
Sedative + Antidepressants		
Clonazepam + Escitalopram	1	5.56%
TOTAL	18	100%

tDCS delivery procedures. The experiment occurred in the Laboratory of Neuroscience and Behavior in the Institute of Biology at the University of Brasilia. In

a controlled environment, the participants were selected using a draw with a system of tokens, and the participants did not know whether they would receive “active” or “sham” stimulation.

The patients were randomly assigned to one of two groups (sham control and active stimulation group). They received tDCS with the anode positioned over the left dorsolateral prefrontal cortex region (F3 of the 10 - 20 international system for electroencephalography electrodes placement) and the cathode over the right supraorbital region (Fp2) (see **Figure 1**), either with continuous delivery of electric current at 2 mA for 20 minutes (active group), or with the current turned off (sham stimulation control group) after a brief ramp-up stimulation to ensure the patients would experience a tingling effect similar to that perceived during real stimulation. Both groups underwent 3 sessions approximately 24 hours apart. Motor and non-motor assessments were done in the first session (visit 1, day 1) and in the last (visit 3, day 3).

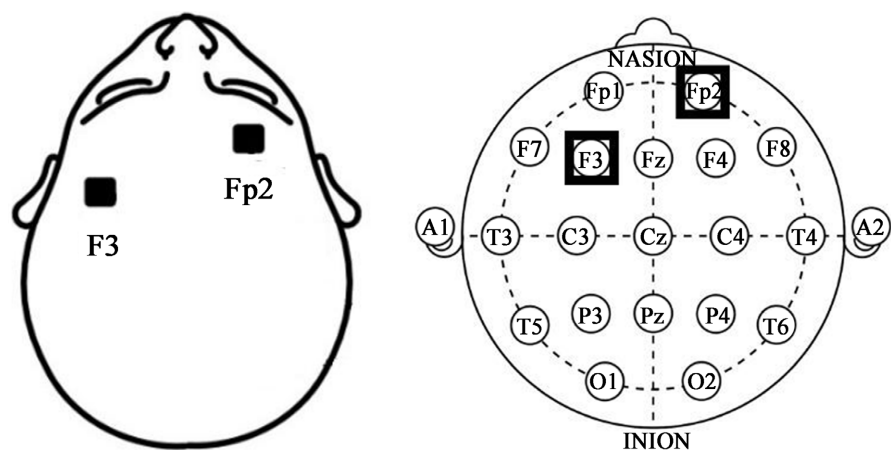


Figure 1. Electrode placement illustration with the anode positioned over the left dorsolateral prefrontal cortex region (F3 of the 10 - 20 international system for electroencephalography electrodes placement) and the cathode over the right supraorbital region (Fp2).

Selection of tDCS parameters: The most frequently used tDCS protocols in clinical trials with Parkinson’s disease patients have been: 1) excitatory electrode over the left dorsolateral prefrontal cortex (L-DLPFC) and cathode over the right supraorbital region and 2) anode over the motor area (M1) and cathode over the right supraorbital or right dorsolateral prefrontal cortex (R-DLPFC) [1] [3] [15] [17] [20] [21]. Therefore, our research protocol was chosen according to the prevailing methods described in the literature.

2.4. Transcranial Direct Current Stimulation Apparatus

The tDCS stimulator used was developed especially for research purposes and was calibrated by the Biomedical Engineering Laboratory of the Faculty of Technology at the University of Brasília. It was powered by two 9 V batteries, with current intensity control ranging from a minimum of 0.5 mA to a maximum of 2

mA. The stimulator had a manual switch that enabled cutting off the current flow during the sham stimulation sessions. The electrodes were made of conductive rubber encased in porous sponges (35 cm) soaked in saline solution. The montage sites on the scalp were based on the International 10 - 20 EEG System.

2.5. Evaluations

2.5.1. Motor Functions

The Unified Parkinson's Disease Rating Scale (UPDRS), part III (motor examination), was used to evaluate the following cardinal signs: Bradykinesia, either in initiation or performance in which overall body movements were observed [22]; Rigidity, identified by the classical cogwheel sign [16] [22]; Rest tremor which is known to increase in situations of emotional stress, mental effort and during gait. It is reduced by active movement of the limb and disappears in sleep [22] [23]. Finally, postural instability is a motor symptom expressed by the loss of postural readaptation and the freezing of gait reflexes that becomes evident with the abrupt change of direction in gait or the execution of a rapid movement [22] [24].

2.5.2. Non-Motor Functions

1) Sleep disorders

The Parkinson's Disease Sleep Scale (PDSS) was used to assess sleep disorders and excessive daytime sleepiness. It consists of 15 items that address nocturnal symptoms related to PD. Each item is rated on a visual analog scale from 0 to 10. The closer to 0, the more severe the symptom, while values closer to 10 indicate less severe involvement. The total score is obtained by adding the items, with a maximum score of 150 points. The criteria evaluated were: Overall sleep quality; difficulty falling asleep; difficulty staying asleep; restless legs syndrome; restlessness in bed; nightmares; visual hallucinations; nocturia; urinary incontinence; numbness or tingling in the arms; limb cramps; pain on waking; tremor on waking; tiredness or sleepiness in the morning; abruptly falling asleep [24].

2) Mood swings: depression and anxiety

The Hospital Anxiety and Depression Scale (HADS) was the instrument that assessed mood symptoms. It consists of seven items that identify anxiety symptoms (HADS-A) such as tension; fear; excessive worry; agitation; distress; restlessness; and feeling of loss of control [25]. There is also a seven-item questionnaire for symptoms of depression (HADS-D): depressed mood; apathy; reduction of emotional stimuli; lethargy; lack of energy; and anhedonia [9] [25].

3) Cognition and Executive Functions

The Parkinson's Disease Cognitive Rating Scale (PD-CRS) was employed to measure cognition and executive functions. The test consisted of frontal subcortical tasks, with the following items: verbal memory of immediate recall; sustained attention; working memory; spontaneous clock drawing; verbal memory of delayed recall; alternating verbal fluency, and verbal fluency of action [10]. The tasks related to the type of impaired cognition in the higher cortical subtype

corresponded to the items: naming by visual confrontation and copying the clock [11]. We also used the Stroop Test in the “reading” and “color naming” versions to further assess executive functions. The Stroop Test protocol allowed the identification of a pattern of responses according to the interference effect in which errors and correct answers provided by congruent and incongruent stimuli were considered [26]. This analysis model and the applicability of the Stroop Test for patients with Parkinson’s disease have been validated [11] [12].

2.6. Statistical Analysis

Statistical analysis was performed using the *Statistical Package for Social Sciences*, SPSS, version 25. Spearman’s correlation test was applied to identify correlations between scale variables, performance in the Stroop Test, and demographic and clinical characteristics of the participants at study baseline. Wilcoxon (non-parametric) and paired t-tests (parametric) were performed to check whether there were significant differences between the participants in the sham control and active groups in the pre- and post-stimulation periods. Moreover, the Wilcoxon test was used to analyze the data from the scales, while the paired t-test compared the hit-and-miss rates in the pre-and post-stimulation conditions in the Stroop test. The significance level adopted was $p \leq 0.05$.

3. Results

The study sample comprised 18 individuals, all diagnosed with Parkinson’s disease according to the Criteria of the London Brain Bank. The volunteers had preserved cognitive status and some motor impairment. The PD staging score by the Hoehn & Yahr scale shows 7 volunteers classified as stage 1.5, which refers to the initial level with unilateral symptoms associated with axial involvement (cra-niocervical or trunk).

3.1. Motor Evaluation

In the first analysis, we observed that the sham group did not show significant differences between baseline and post-3-day test evaluation (**Table 3**).

In the active group, however, we found significant differences pre vs post-evaluation for finger tapping on the right upper limb ($p = 0.038$), hand movement on the right upper limb ($p = 0.046$), posture ($p = 0.034$) and gait (0.025) (**Table 4**).

Regarding the total score for the UPDRS scale, the active group presented, from the pre- to the post-stimulation moment, a greater variation in scores when compared to the sham group (**Figure 2**). The median decreased from 18 to around 15, and there were changes in the percentile levels as well. In the sham group, the median increased slightly. The quartiles kept similar levels from the pre- to the post-phase. In the active group, the median remained below 20 on the full scale, both before and after stimulation. For the sham group, the scale was scored above 20, *i.e.*, the scale levels for the sham group were slightly higher.

Table 3. Effects of tDCS on motor symptoms.

Variable		Wilcoxon Test (Baseline X Day 3)—UPDRS Motor Scale								
		p-value	Mean_pre	Mean_post	SD_pre	SD_post	Median_pre	Median_post	IQR_pre	IQR_post
Speech		1.000	0.78	0.78	0.83	0.83	1.0	1	1.00	1
Facial Expression		0.317	0.89	0.89	0.93	0.93	1.0	1	2.00	2
Rest Tremor	Chin	0.317	0.33	0.22	0.50	0.44	0.0	0	1.00	0
	Rul	1.000	1.33	1.44	0.50	0.53	1.0	1	1.00	1
	Lul	0.564	0.89	0.89	0.78	0.93	1.0	1	1.00	2
	Ril	0.577	1.00	1.00	0.71	0.71	1.0	1	0.00	0
	Lil	1.000	0.89	0.78	0.78	0.67	1.0	1	1.00	1
Postural Tremor	Rul	1.000	0.89	0.67	0.78	0.71	1.0	1	1.00	1
	Lul	1.000	0.33	0.33	0.50	0.50	0.0	0	1.00	1
Rigidity	Cervical	0.462	1.56	1.00	1.24	0.87	1.0	1	2.00	0
	Rul	0.655	1.00	1.00	0.71	0.71	1.0	1	0.00	0
	Lul	0.655	0.89	0.89	1.05	1.05	1.0	1	1.00	1
	Ril	1.000	0.89	0.56	0.78	0.73	1.0	0	1.00	1
	Lil	0.317	0.89	0.89	0.93	0.93	1.0	1	2.00	2
Finger Tapping	Rul	0.102	0.89	1.00	0.78	0.71	1.0	1	1.00	0
	Lul	0.257	0.78	0.78	0.83	0.83	1.0	1	1.00	1
Hand Movement	Rul	0.102	1.11	1.00	1.05	0.87	1.0	1	2.00	2
	Lul	0.408	1.22	0.78	0.97	0.97	2.0	0	2.00	2
Pronation-Supination	Rul	0.655	1.22	1.00	0.83	0.87	1.0	1	0.00	0
	Lul	1.000	0.67	0.67	0.87	0.87	0.0	0	1.00	1
Toe Tapping	Ril	0.705	1.33	0.89	1.00	0.93	1.0	1	1.00	2
	Ril	0.655	0.89	0.78	0.93	0.97	1.0	0	2.00	2
Arising from chair		0.317	1.00	0.89	0.87	0.60	1.0	1	2.00	0
Posture		0.705	1.11	0.67	0.33	0.50	1.0	1	0.00	1
Gait		0.257	1.00	0.56	0.87	0.88	1.0	0	2.00	1
Postural Stability		0.317	1.33	1.11	0.50	0.78	1.0	1	1.00	1
Bradykinesia		0.157	0.89	0.44	0.93	0.53	1.0	0	1.00	1

p value < 0.05. Rul: Right upper limb; Lul: Left upper limb; Ril: Right inferior limb; Lil: Left inferior limb.

Table 4. Effects of tDCS on motor symptoms.

Variable		Wilcoxon Test (Baseline X Day 3)—UPDRS Motor Scale								
		p-value	Active Group							
			Mean_pre	Mean_post	SD_pre	SD_post	Median_pre	Median_post	IQR_pre	IQR_post
Speech		1.000	0.78	0.78	0.83	0.83	1.0	1.0	1.00	1.00
Facial Expression		0.083	0.44	0.22	0.73	0.44	0.0	0.0	1.00	0.00
Rest Tremor	Chin	1.000	0.44	0.33	0.53	0.50	0.0	0.0	1.00	1.00
	Rul	0.655	0.89	0.89	0.60	0.60	1.0	1.0	0.00	0.00
	Lul	0.414	1.00	0.78	0.87	0.83	1.0	1.0	2.00	1.00
	Ril	0.655	1.22	1.22	0.83	0.83	1.0	1.0	1.00	1.00
	Lil	0.414	1.00	0.78	1.12	1.09	1.0	0.0	2.00	1.00
Postural Tremor	Rul	0.564	1.00	1.00	1.00	1.00	1.0	1.0	1.00	1.00
	Lul	0.102	0.89	0.89	0.33	0.33	1.0	1.0	0.00	0.00
Rigidity	Cervical	0.564	0.78	0.78	1.09	0.83	0.0	1.0	1.00	1.00
	Rul	0.414	0.89	1.00	0.78	0.87	1.0	1.0	1.00	2.00
	Lul	0.414	0.89	1.00	1.05	1.00	1.0	1.0	1.00	1.00
	Ril	0.564	0.67	0.78	0.71	0.67	1.0	1.0	1.00	1.00
	Lil	0.183	1.22	1.00	1.09	0.87	1.0	1.0	2.00	2.00
Finger Tapping	Rul	0.038	0.56	0.67	0.88	1.00	0.0	0.0	1.00	2.00
	Lul	0.713	1.00	1.89	1.00	3.48	1.0	1.0	1.00	1.00
Hand Movement	Rul	0.046	0.78	0.78	0.97	0.97	0.0	0.0	2.00	2.00
	Lul	0.157	1.33	1.11	1.00	0.60	1.0	1.0	1.00	0.00
Pronation-Supination	Rul	0.655	0.89	0.89	0.93	0.93	1.0	1.0	2.00	2.00
	Lul	0.481	1.00	0.89	0.50	0.33	1.0	1.0	0.00	0.00
Toe Tapping	Ril	1.000	0.89	0.89	1.05	1.05	1.0	1.0	1.00	1.00
	Lul	0.414	0.89	0.78	0.93	0.97	1.0	1.0	1.00	1.00
Arising from chair		1.000	1.00	1.00	1.32	1.32	1.0	1.0	1.00	1.00
Posture		0.034	1.44	0.78	1.01	0.83	2.0	1.0	1.00	1.00
Gait		0.025	1.44	0.67	0.73	0.71	2.0	1.0	1.00	1.00
Postural Stability		0.564	0.56	0.67	0.73	0.87	0.0	0.0	1.00	1.00
Bradykinesia		0.655	1.00	1.00	0.71	0.71	1.0	1.0	0.00	0.00

p value < 0.05. Rul: Right upper limb; Lul: Left upper limb; Ril: Right inferior limb; Lil: Left inferior limb.

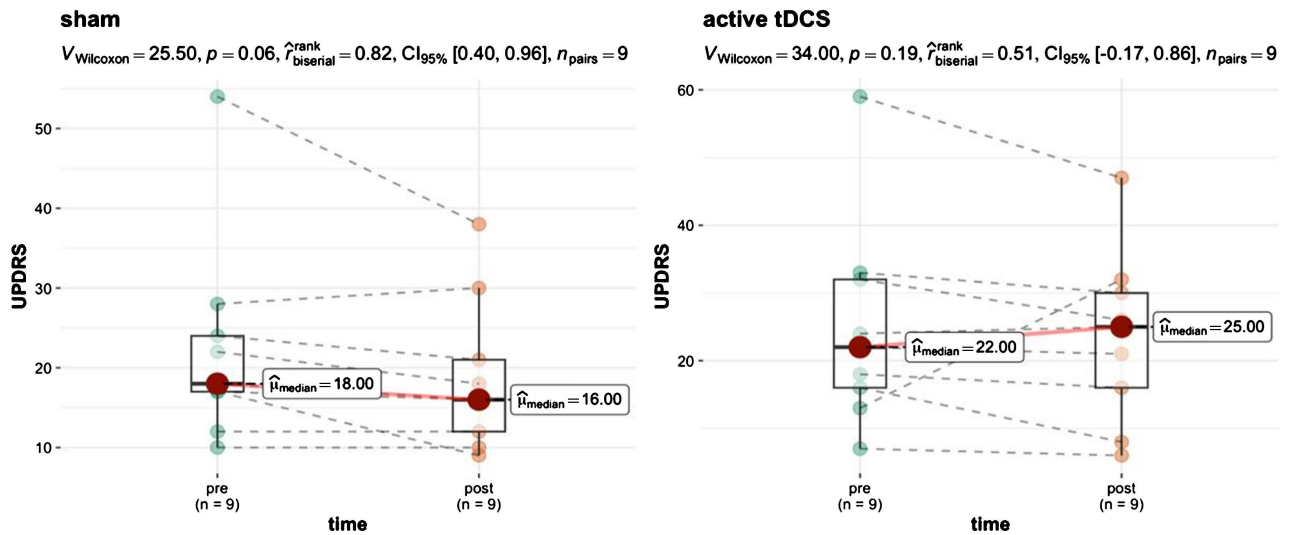


Figure 2. Effects of tDCS on motor symptoms for the active (real) and sham groups. The figure illustrates the effects of transcranial direct current stimulation (tDCS) on motor symptoms as measured by the Unified Parkinson’s Disease Rating Scale (UPDRS), where lower scores indicate fewer motor symptoms. Left Panel (Sham): The UPDRS scores exhibit a median decrease from 18.00 pre-intervention to 16.00 post-intervention. The Wilcoxon test indicates no significant change ($V = 25.50, p = 0.06$), with a rank-biserial correlation of 0.82 (95% CI [0.40, 0.96]). Right Panel (Active tDCS): The UPDRS scores show a median increase from 22.00 pre-intervention to 25.00 post-intervention. The Wilcoxon test indicates no significant change ($V = 34.00, p = 0.19$), with a rank-biserial correlation of 0.51 (95% CI [-0.17, 0.86]).

3.2. Sleep Disturbances

The performance of the sham group comparing the pre-stimulation with the post-stimulation stages showed weak relationships between the items. As for the active group, significant results were found for the variables [6] suffer from distressing dreams at night ($p = 0.027$), [10] experiences of numbness or tingling in arms or legs which wake up from sleep at night ($p = 0.042$), [11] painful muscle cramps in arms or legs whilst sleeping at night ($p = 0.027$) and [12] wake early in the morning with painful posturing of arms or legs ($p = 0.017$).

Table 5. Effects of tDCS on sleep disturbances.

Wilcoxon Test (Baseline X Day 3)—PDSS scale		
Variable	p-value	
	Sham	Active
(1) The overall quality of your night’s sleep is:	0.157	0.414
(2) Do you have difficulty falling asleep each night?	0.395	0.138
(3) Do you have difficulty staying asleep?	0.317	0.127
(4) Do you have restlessness of legs or arms at night or in the evening causing disruption of sleep?	0.236	0.173
(5) Do you fidget in bed?	0.661	0.291
(6) Do you suffer from distressing dreams at night?	0.107	0.027
(7) Do you suffer from distressing hallucination at night (seeing or hearing things that you are told do not exist)?	0.715	0.577

Continued

(8) Do you get up at night to pass urine?	0.306	0.397
(9) Do you have incontinence of urine because you are unable to move due to “off” symptoms?	0.596	0.059
(10) Do you experience numbness or tingling of your arms or legs which wakes you from sleep at night?	0.102	0.042
(11) Do you have painful muscle cramps in your arms or legs whilst sleeping at night?	0.655	0.027
(12) Do you wake early in the morning with painful posturing of arms or legs?	0.865	0.017
(13) On waking do you experience tremor?	0.461	0.696
(14) Do you feel tired and sleepy after waking in the morning?	0.336	0.324
(15) Have you unexpectedly fallen asleep during the day?	0.584	0.427

*p value < 0.05.

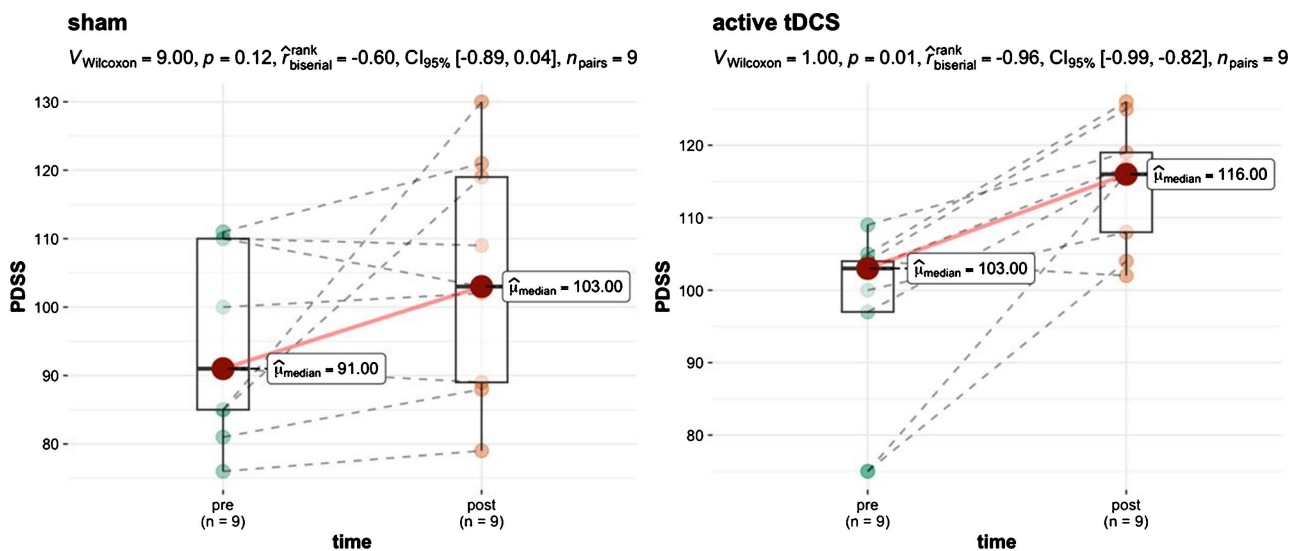


Figure 3. Effects of tDCS on sleep disorders for the active (real) and sham groups. Low scores indicate more severe sleep disorders. Left Panel (Sham): The PDSS scores show a median increase from 91.00 pre-intervention to 103.00 post-intervention. The Wilcoxon test shows no significant change ($V = 9.00$, $p = 0.12$), with a rank-biserial correlation of -0.60 (95% CI $[-0.89, 0.04]$). Right Panel (Active tDCS): The PDSS scores show a median increase from 103.00 pre-intervention to 116.00 post-intervention. The Wilcoxon test indicates a significant increase ($V = 1.00$, $p = 0.01$), with a rank-biserial correlation of -0.96 (95% CI $[-0.99, -0.82]$). This suggests a positive effect of tDCS on sleep disorders in the active group.

For the active group, tDCS improved sleep, tingling in the arms and legs at night, and reduction of painful muscle cramps and painful posture in the limbs upon waking up. No such effects were observed for the sham group when comparing pre-stimulation and post-stimulation periods (Figure 3). In the PDSS scale we observed an increase in the medians for the active and sham groups when comparing pre- and post-stimulation phases.

3.3. Effects on Mood

The Wilcoxon test did not indicate significant differences for the sham group when comparing the participants' scores in terms of anxiety and depression measured by the HADS scale in the pre-stimulation and post-stimulation sessions (Table 6).

As for the active group, there was a significant result in item (3): “I get a sort of frightened feeling as if something awful is about to happen” (p = 0.039). (Table 7)

Table 6. Effects on mood.

Variable	Wilcoxon Test (Baseline X Day 3)—HADS scale										
	p-value	Sham Group								IQR _pre	IQR _post
		Mean _pre	Mean _post	SD _pre	SD _post	Median _pre	Median _post	IQR _pre	IQR _post		
Anxiety subscale											
(1) I feel tense or “wound-up”	0.257	1.33	1.00	0.87	0.50	1.0	1	1.00	0		
(3) I get a sort of frightened feeling as if something awful is about to happen	1.000	0.78	0.78	0.83	0.83	1.0	1	1.00	1		
(5) Worrying thoughts go through my mind	0.584	0.89	1.00	0.93	0.87	1.0	1	1.00	0		
(7) I can sit at ease and feel relaxed	0.317	0.89	0.67	0.78	0.71	1.0	1	1.00	1		
(9) I get a sort of frightened feeling like “butterflies” in my stomach	0.234	1.11	0.67	1.05	0.50	1.0	1	2.00	1		
(11) I feel restless as if I have to be on the move	0.48	1.33	1.67	1.00	1.22	1.0	1	1.00	2		
(13) I get a sudden feeling of panic	0.879	0.78	0.33	1.09	0.50	0.0	0	1.00	1		
Depression subscale											
(2) I still enjoy the things I used to enjoy	0.317	1.00	0.78	0.50	0.83	1.0	1	0.00	1		
(4) I can laugh and see the funny side of things	0.59	0.67	1.22	0.71	0.67	1.0	1	1.00	1		
(6) I feel cheerful	0.18	1.00	0.67	0.71	0.71	1.0	1	0.00	1		
(8) I feel as if I am slowed down	0.141	1.78	2.00	0.83	1.00	2.0	2	1.00	1		
(10) I have lost interest in my appearance	1.000	1.11	1.11	0.78	1.05	1.0	1	1.00	2		
(12) I look forward with enjoyment to things	0.785	0.67	0.56	0.71	0.73	1.0	0	1.00	1		
(14) I can enjoy a good book or radio or a TV program	0.705	1.00	1.00	1.12	0.87	1.0	1	2.00	2		

p value < 0.05.

Table 7. Effects on mood.

Variable	Wilcoxon Test (Baseline X Day 3)—HADS scale										
	p-value	Active Group								IQR _pre	IQR _post
		Mean _pre	Mean _post	SD _pre	SD _post	Median _pre	Median _post	IQR _pre	IQR _post		
Anxiety subscale											
(1) I feel tense or “wound-up”	0.131	1.11	1.78	0.60	1.09	1.0	2.0	0.00	2.00		
(3) I get a sort of frightened feeling as if something awful is about to happen	0.039	1.33	0.44	1.00	0.73	1.0	0.0	1.00	1.00		
(5) Worrying thoughts go through my mind	0.157	0.67	0.44	0.87	0.73	0.0	0.0	1.00	1.00		
(7) I can sit at ease and feel relaxed	0.257	0.89	0.56	0.78	0.53	1.0	1.0	1.00	1.00		
(9) I get a sort of frightened feeling like “butterflies” in my stomach	0.234	0.44	0.44	0.53	0.73	0.0	0.0	1.00	1.00		

Continued

(11) I feel restless as if I have to be on the move	0.48	0.56	0.56	0.73	1.01	0.0	0.0	1.00	1.00
(13) I get a sudden feeling of panic	0.879	0.22	0.33	0.44	0.50	0.0	0.0	0.00	1.00
Depression subscale									
(2) I still enjoy the things I used to enjoy	0.141	0.67	0.44	1.00	0.53	0.0	0.0	1.00	1.00
(4) I can laugh and see the funny side of things	0.584	0.33	0.22	0.50	0.67	0.0	0.0	1.00	0.00
(6) I feel cheerful	1	0.33	0.33	0.50	0.50	0.0	0.0	1.00	1.00
(8) I feel as if I am slowed down	0.785	1.56	1.67	1.24	1.12	1.0	1.0	2.00	2.00
(10) I have lost interest in my appearance	0.257	0.67	0.33	0.71	0.50	1.0	0.0	1.00	1.00
(12) I look forward with enjoyment to things	0.102	1.00	1.00	1.12	1.12	1.0	1.0	2.00	2.00
(14) I can enjoy a good book or radio or a TV program	0.705	0.44	0.67	0.73	1.00	0.0	0.0	1.00	1.00

p value < 0.05.

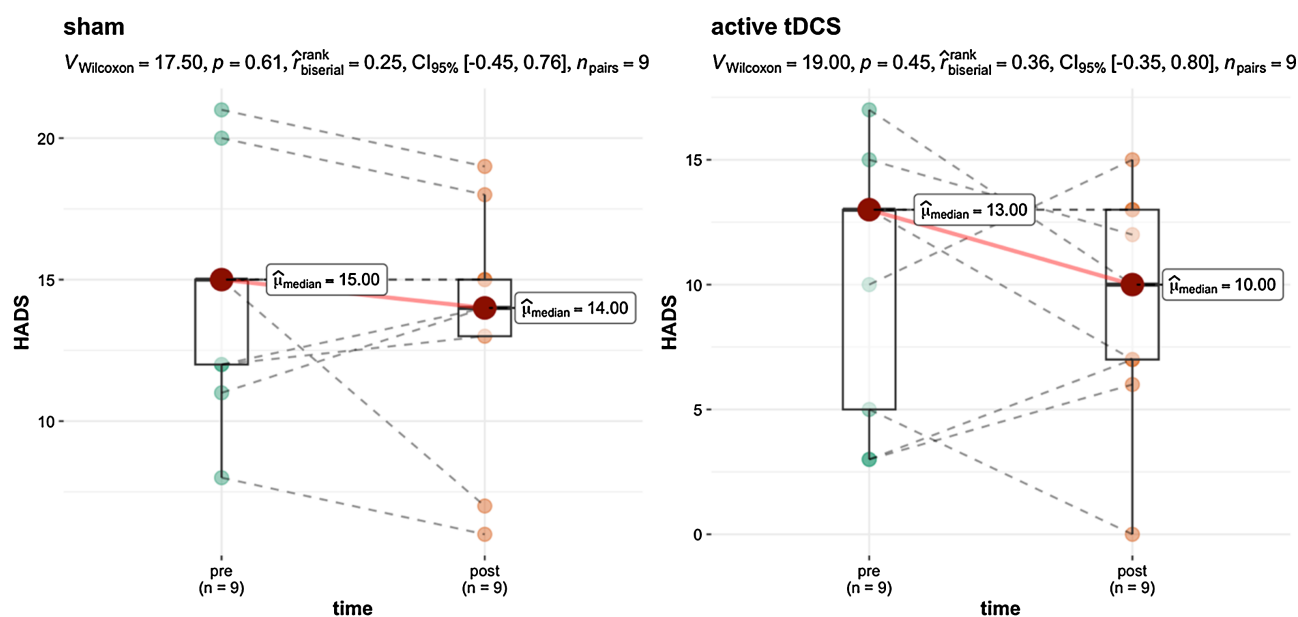


Figure 4. Effects of tDCS on mood for the active (real) and sham groups. A low score on the Hospital Anxiety and Depression Scale (HADS) indicates better mood. Left Panel (Sham): The HADS scores show a median decrease from 15.00 pre-intervention to 14.00 post-intervention. The Wilcoxon test indicates no significant change ($V = 17.50$, $p = 0.61$), with a rank-biserial correlation of 0.25 (95% CI [-0.45, 0.76]). Right Panel (Active tDCS): The HADS scores show a median decrease from 13.00 pre-intervention to 10.00 post-intervention. The Wilcoxon test indicates no significant change ($V = 19.00$, $p = 0.45$), with a rank-biserial correlation of 0.36 (95% CI [-0.35, 0.80]).

Regarding the percentiles that show the objective results of the scale, there was no discernible pattern of variation between the quartiles in the graphs, either for the sham or the active group (Figure 4).

3.4. Effects on Cognition and Executive Functions

In the PD-CRS scale, the sham group did not show significant differences between baseline and post-3-day test evaluation (Table 8).

In contrast, for the active group, there were significant results concerning the frontal-subcortical tests: [1] immediate free recall verbal memory ($p = 0.016$) and [9] action verbal fluency ($p = 0.018$). Furthermore, results were also significant in the cortical tests: [2] confrontation naming ($p = 0.011$) and [6] copy drawing of a clock ($p = 0.024$) (Table 9).

Table 8. Effects of tDCS on cognition and executive functions.

Variable	Wilcoxon Test (Baseline X Day 3)—PD-CRS Scale								
	p-value	Sham Group							
		Mean _pre	Mean _post	SD _pre	SD _post	Median _pre	Median _post	IQR _pre	IQR _post
Frontal subcortical Tests									
(1) Immediate free recall verbal memory	0.12	6.33	7.67	1.94	2.00	7.0	7	2.00	2
(3) Sustained attention	0.725	6.22	7.00	2.59	2.29	8.0	7	4.00	3
(4) Working memory	0.786	4.00	3.89	2.12	1.76	4.0	4	2.00	2
(5) Unprompted drawing of a clock	0.131	8.00	9.33	1.41	0.87	8.0	10	2.00	1
(7) Delayed free recall verbal memory	0.152	4.11	5.11	1.69	3.82	4.0	5	2.00	5
(8) Alternating verbal fluency	0.832	4.78	5.11	1.56	1.90	5.0	5	2.00	4
(9) Action verbal fluency	0.135	9.11	9.11	3.18	2.42	8.0	9	4.00	3
Cortical Tests									
(2) Confrontation naming	0.246	11.11	13.33	4.46	4.66	13.0	14	5.00	2
(6) Copy drawing of a clock	0.102	8.33	9.44	1.58	0.73	9.0	10	1.00	1

p value < 0.05.

Table 9. Effects of tDCS on cognition.

Variable	Wilcoxon Test (Baseline X Day 3)—PD-CRS Scale								
	p-value	Active Group							
		Mean _pre	Mean _post	SD _pre	SD _post	Median _pre	Median _post	IQR _pre	IQR _post
Fronto-subcortical Tests									
(1) Immediate free recall verbal memory	0.016	7.56	8.67	2.01	2.00	7.0	8.0	2.00	2.00
(3) Sustained attention	0.12	7.44	8.67	2.01	1.58	8.0	9.0	3.00	1.00
(4) Working memory	0.433	5.44	6.00	1.94	1.12	6.0	6.0	2.00	0.00
(5) Unprompted drawing of a clock	0.126	9.11	9.67	1.36	0.50	10.0	10.0	2.00	1.00
(7) Delayed free recall verbal memory	0.235	3.78	5.11	2.73	1.83	3.0	4.0	4.00	2.00
(8) Alternating verbal fluency	0.322	6.22	6.33	2.17	1.58	5.0	7.0	4.00	2.00
(9) Action verbal fluency	0.018	14.22	17.22	5.78	5.85	14.0	20.0	8.00	7.00
Cortical Tests									
(2) Confrontation naming	0.011	14.22	14.89	5.04	4.51	16.0	17.0	9.00	8.00
(6) Copy drawing of a clock	0.024	9.44	10.00	0.88	0.00	10.0	10.0	1.00	0.00

p value < 0.05.

The results of the total scores of the PD-CRS scale indicated an increase from pre- to post-stimulation levels in both groups. However, the performance of the active group was considerably higher.

In **Figure 5** it is possible to observe the effects of tDCS in the active group when the participants' performance was better in the post-stimulation tests than at baseline. In the sham group, it was also possible to observe a better result when comparing the baseline to the post-stimulation scores. Statistical analysis shows significant differences in both groups.

The participants' performance after tDCS sessions for the Color and Word Stroop Test was determined by the Wilcoxon Test. The analysis is based on right answers, errors, and omissions. The p-value between the groups indicated significant results for the correct answers in both groups: sham ($p = 0.041$) and active ($p = 0.018$) (**Table 10** and **Table 11**).

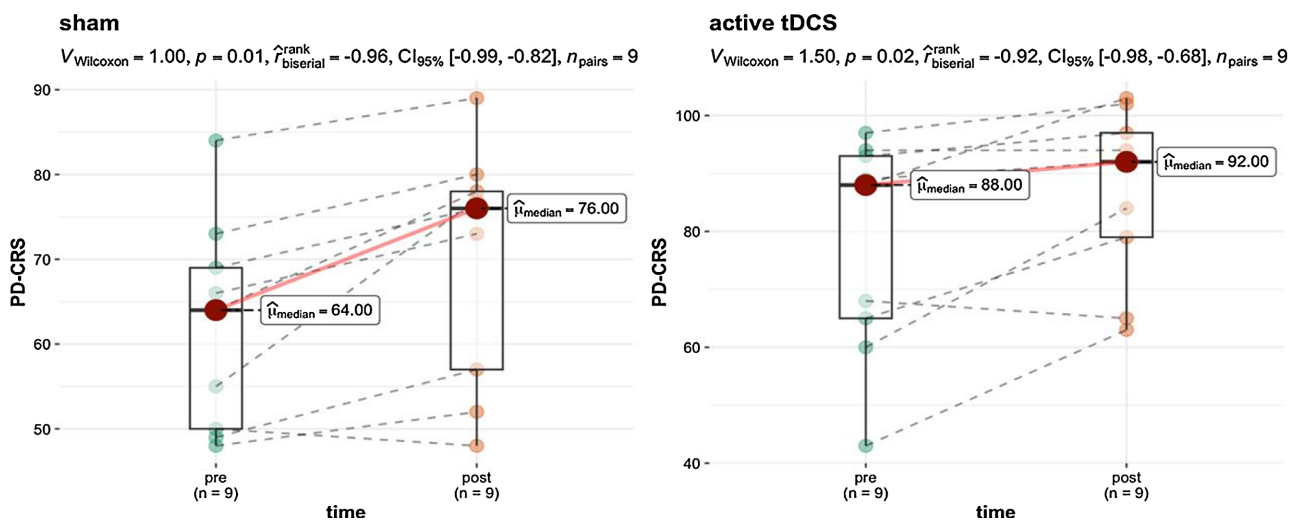


Figure 5. Effects on Executive Functions for Active (Real) and Sham Groups. Higher PD-CRS scores indicate better cognitive performance. The total PD-CRS scores increased from pre- to post-stimulation in both groups, with the active group showing a significantly higher performance. Left Panel (Sham): The PD-CRS scores show a median increase from 64.00 pre-intervention to 76.00 post-intervention. The Wilcoxon test indicates a significant increase ($V = 1.00, p = 0.01$), with a rank-biserial correlation of -0.96 (95% CI $[-0.99, -0.82]$). Right Panel (Active tDCS): The PD-CRS scores show a median increase from 88.00 pre-intervention to 92.00 post-intervention. The Wilcoxon test indicates a significant increase ($V = 1.50, p = 0.02$), with a rank-biserial correlation of -0.92 (95% CI $[-0.98, -0.68]$). Additional analysis using the Wilcoxon test showed significant differences in the active group for immediate free recall verbal memory ($p = 0.016$), action verbal fluency ($p = 0.018$), confrontation naming ($p = 0.011$), and copy drawing of a clock ($p = 0.024$).

Table 10. Effects of tDCS on executive functions.

Variable	Wilcoxon Test (Baseline X Day 3)—Stroop Test								
	Sham Group								
	p-value	Mean_pre	Mean_post	SD_pre	SD_post	Median_pre	Median_post	IQR_pre	IQR_post
(1) Right answer	0.041	6.11	7.22	3.06	3.60	5.0	6	6.00	6
(2) Error	0.82	6.11	5.33	2.20	3.08	7.0	6	3.00	5
(3) Omission	1	3.78	3.44	1.72	2.24	4.0	3	2.00	3

p value < 0.05.

Table 11. Effects of tDCS on executive functions.

Variable	Wilcoxon Test (Baseline X Day 3)—Stroop Test								
	Active Group								
	p-value	Mean_pre	Mean_post	SD_pre	SD_post	Median_pre	Median_post	IQR_pre	IQR_post
(1) Right answer	0.018	8.78	12.22	2.82	3.99	9.0	14.0	4.00	3.00
(2) Error	0.076	5.22	2.22	2.64	3.35	6.0	1.0	1.00	1.00
(3) Omission	0.087	1.89	1.56	1.76	1.88	1.0	1.0	2.00	2.00

* p value < 0.05.

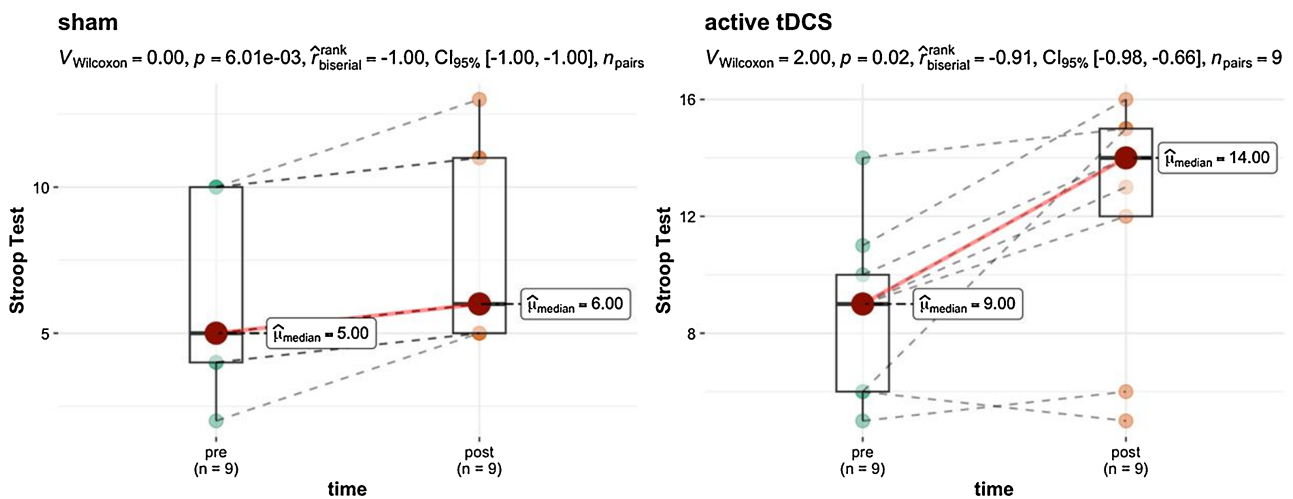


Figure 6. Effects of Sham and Active tDCS on Stroop Test. Higher Stroop Test scores indicate better performance in executive functions. Both groups show improvement from baseline to post-stimulation. Left Panel (Sham): The Stroop Test scores increased from a median of 5.00 pre-intervention to 6.00 post-intervention. The Wilcoxon test indicates a significant increase ($V = 0.00$, $p = 0.006$), with a rank-biserial correlation of -1.00 (95% CI $[-1.00, -1.00]$). Right Panel (Active tDCS): The Stroop Test scores increased from a median of 9.00 pre-intervention to 14.00 post-intervention. The Wilcoxon test indicates a significant increase ($V = 2.00$, $p = 0.02$), with a rank-biserial correlation of -0.91 (95% CI $[-0.98, -0.66]$).

In **Figure 6** it is possible to observe the effects of tDCS in the active group when the performance of the participants was better in the post-stimulation tests than at baseline. In the sham group, it was also possible to observe a better result when comparing the baseline to the post-stimulation scores. Statistical analysis of the median shows significant differences in both groups.

4. Discussion

Levodopa is a primary treatment for PD with beneficial effects for most patients. However, long-term complications such as motor fluctuations, dyskinesias, major depression, and psychotic symptoms are possible. Moreover, as PD progresses, levodopa effects wear off and other clinical manifestations also occur, both motor and non-motor, such as freezing of gait and dementia [7].

Additional strategies that improve the patient’s symptoms and quality of life are essential. In this regard, recent studies have suggested a possible role for non-invasive electrical stimulation. Transcranial electrical stimulation can mod-

ulate resting membrane potentials, therefore generating changes in the polarization and depolarization process that may improve symptoms of neurological diseases [27]. tDCS allows synaptic plasticity while exciting or inhibiting brain regions, an adaptive neural strategy.

Different from transcranial magnetic stimulation (TMS), tDCS cannot produce motor-evoked potentials since the change in resting membrane potential does not reach the threshold for action potential firing. However, prolonged modulation, applied for more than three minutes, can generate changes in glutamatergic and GABAergic receptors [28]. The spatial resolution of tDCS is uncertain since it may also influence deeper brain structures connected to the target cortical region [29].

Our results have shown significant improvement in motor function in PD patients who received active tDCS anodal stimulation to the left dorsolateral prefrontal cortex region (2 mA for 20 min, 3 sessions), particularly regarding rigidity, the finger tapping test, posture, and general gait patterns. Non-significant improvement was observed for participants who received sham tDCS.

It is important to point out that other authors have previously reported both similar and divergent results. Therefore, at the present stage of this field of study, it is important to try to replicate previous results so that meaningful meta-analysis can be done to instruct future controlled clinical trials. An example of these uncertainties concerns studies that investigated the effects of tDCS on PD patients using anodal stimulation to the left dorsolateral prefrontal cortex (L-DLPFC). Doruk *et al.* [2], in ten neuromodulation sessions with an intensity of 2 mA, did not obtain significant improvement in motor function, while Chang *et al.* [30], with five sessions, employing a current intensity of 1 mA for 20 minutes, obtained a satisfactory short-term response for the occurrence of freezing. Swank [31], in a study that employed two sessions, with a current intensity of 2 mA for 20 minutes, obtained moderate evidence of improved motor functions measured by UPDRS.

Studies in which tDCS was applied to the primary motor area presented more agreement regarding satisfactory results. Fregni *et al.* [28], with a single session and a current intensity of 1 mA for 20 minutes, observed significant improvement in motor function, as did Benninger [21] with eight sessions, at 2 mA of intensity and 20 minutes of stimulation; Valentino [32], with five sessions, at 2 mA intensity for 20 minutes, and Kaski [33] with five sessions, at 2 mA intensity for 3 minutes of tDCS, employing a dancing task. The most significant motor effects described in the literature were improvements in gait, rigidity, and bradykinesia, evaluated with *the Timed Up and Go* motor test, as well as other gait performance assessments [19] [34].

Although sleep disorders in PD are known to represent a major aspect of Parkinsonian patients' complaints, this variable is not a frequently evaluated parameter in tDCS studies. Despite the low rate of sleep assessments, Hadoush and collaborators [28], using a study protocol of anodal tDCS applied to the L-DLPFC, in 20-minute sessions with an electrical current intensity of 2 mA,

obtained significant improvements in sleep latency, global sleep quality, reduction in sleeping medication, in sleep disorders, as well as a reduction in daytime dysfunction. Forogh and co-workers [16] investigated the effects of anodal tDCS on the L-DLPFC, during 10 sessions, each lasting 20 minutes with a current intensity of 2 mA. The results were reevaluated after three months, and a significant improvement in fatigue was noted, something that was questioned by the researchers as being an effect of improvement in mood and not necessarily in sleep quality.

The results obtained in our study regarding the mood domain align with what the literature shows for anodal L-DLPFC stimulation for mood, which is the most consolidated protocol for depression treatment and is already used in clinical practice. Patients in the active group showed an improvement in mood, particularly clear for a decrease in anxiety. The literature explains the improvement in depressive symptoms and other behavioral effects of tDCS through a process akin to long-term potentiation (LTP) in which there is a permanent increase in synapse strength due to high-frequency stimulation produced by a chemical stimulus. LTP is likely triggered by applying a low-intensity direct current that changes the intracerebral current flow, generating effects compatible with mood improvement [35] [36] [37].

Moreover, depression in PD is associated with changes in dopaminergic pathways, and cortical and subcortical afferents in which the irregular neuronal excitability reaches L-DLPFC causing psychiatric manifestations in some patients. It is likely that anodal tDCS over the L-DLPFC also produces neuromodulation of the DA system in this area [37].

Again, there is some controversy regarding the mood modulation of PD patients by tDCS. Some studies employing L-DLPFC tDCS with PD patients have shown improvement in anxiety and depression [17] [39], while others did not observe mood improvement with a single session of tDCS. Manenti [18] used the neuromodulation protocol with a constant current of 2 mA applied for 7 minutes (with a ramping period of ten seconds at the beginning and end of the stimulation) and observed a slight momentary improvement in the mood of the participants. Lawrence [17] used a protocol with an intensity of 2 mA for 20 minutes and the effects on depression were significant when associated with cognitive training for four weeks. Impressive results on mood improvement were observed in the studies by Pereira [39], who conducted a study with a single session of tDCS with the intensity of 2 mA.

Another important aspect related to PD is that, as the pathology progresses, a specific dementia picture, called Parkinson's Disease Dementia, becomes evident. Therefore, the cognitive profile of patients who develop this dementia has greater impairment in executive functions, attention, and visuospatial memory (which would be associated with subcortical changes) and a lesser impairment in declarative memory, language, and practice (which would be associated with cortical changes) [39].

We found significant improvement in patients who received active tDCS stimulation compared to sham tDCS in cognitive functions related to verbal mem-

ory (free and immediate recall), naming by visual confrontation, clock copy test, and verbal fluency. Although the sham group did not present significant changes concerning pre- and post-stimulation tests (Wilcoxon test, see tables in the Results sections for details), the medians were slightly reduced between the phases, suggesting a possible learning effect for repeated tests. Therefore, the difference observed between active and sham control groups is likely due to the tDCS treatment and not only to the learning effects of repeated testing.

Regarding the cognitive effects of anodal tDCS when applied in L-DLPFC of patients with PD, the literature points to the effectiveness of the technique, thus corroborating our results. For instance, Boggio *et al.* [38] using a 2 mA protocol of current intensity applied for 20 minutes in a single session observed an increase in the scores of the response time and working memory test. Pereira *et al.* [39] identified a significant improvement in phonological verbal fluency after a 20-minute session, applied with a current intensity of 2 mA.

The Stroop Test is widely used in evaluating executive functions in patients with PD because it measures an ability commonly impaired in pathology, the inhibitory control [40]. Studies show that the Stroop test is reliable for identifying deficits associated with L-DLPFC and the main motor area [6] [41].

The performance of our patients who received real tDCS showed a significant improvement in the number of correct answers and error reduction in the Stroop test, suggesting activation of executive functions with increased inhibition control, cognitive flexibility and working memory.

Regarding executive functions, Doruk [2] reported that anodal tDCS over the L-DLPFC, after 20-minute sessions of 2 mA stimulation, improves the performance of the Trail trail-making tests. Manenti and collaborators [19] investigated the effects of anodal transcranial direct current stimulation applied over the dorsolateral prefrontal cortex and combined with physical therapy in PD patients. Their results indicated improved motor abilities, reduced depressive symptoms, and increased performance in the Parkinson's Disease Cognitive Rating Scale and verbal fluency test. Lawrence *et al.* [17] showed significant improvements across executive function, attention/working memory, memory, language, activities of daily living, and quality of life.

There are some potential limitations in this study, such as the small number of participants and the low number of tDCS sessions and follow-up time. Future cross-over studies would be useful to observe, with greater accuracy, the effects of treatments with the patients as their controls. However, an appropriate wash-out time interval must be determined to prevent the residual effects of previous stimulations. Another limitation was the unblinded condition of the examiners. Since one of the researchers applying tDCS also had to be trained for scoring the patients, the study was not double-blinded, a problem that should also be addressed in future studies.

Another confounding factor is the variable drug regimens of the patients included in the study. However, for medical and ethical reasons, it is impossible to

withdraw or standardize drug treatments in all patients. Many patients were receiving benzodiazepines. Many of our patients were on benzodiazepines, which raises the question of possible pharmacological interference with our results. However, neuroplastic after-effects of tDCS are NMDA-receptor dependent [42]. Anodal after-effects can be selectively suppressed by the sodium channel blocker carbamazepine and the calcium channel blocker flunarizine [43]. tDCS after-effects are also thought to be mediated by synaptic modulation like those occurring in long-term potentiation studies. In this regard, Xu and Sastry [44] have found that benzodiazepine receptors do not participate in LTP induction. Thus, it is unlikely that the use of benzodiazepines by our patients has had a significant effect on the observed tDCS after-effects.

Finally, larger randomized-controlled trials, using more than one scale to assess motor function and with extended follow-up periods are needed for elucidating the potential role of this new treatment modality in the clinical management of PD patients.

5. Conclusions

This study identified improvement after tDCS neuromodulation on motor functions, especially in gait patterns, posture, and subtests indicative of bradykinesia (hand movements and *finger tapping*). Regarding non-motor functions, significant improvements were observed in the items related to sleep disorders, such as tingling or numbness in the arms or legs at night, muscle cramps at night, and painful postures upon awakening. Regarding mood spectrum, significant improvements were observed for the real group concerning anxiety and depression after tDCS. As to cognition and executive functions, tDCS showed positive effects on the items: verbal memory with immediate free recall, naming pattern by visual confrontation, the clock copy test, and verbal fluency of actions. Finally, the performance on the Stroop test for executive functions showed an improvement for both congruent and incongruent stimuli.

The present results indicate that tDCS neuromodulation of the left dorsolateral prefrontal cortex region is feasible, safe, and might provide significant clinical benefits for PD patients. Further controlled studies with larger numbers of patients are necessary to establish the real potential of this non-pharmacological tool in the management of PD patients.

Author Contributions

Conceptualization, F.P. and M.C.H.T.; methodology, F.P., M.C.H.T. and J.B.N.; formal analysis, F.P., M.C.H.T., C.T., N.A., P.B. and J.B.N.; investigation, F.P. and M.C.H.T.; writing—original draft, F.P., M.C.H.T., C.T., P.B., N.A. and J.P.N. All authors have read and agreed to the published version of the manuscript.

Institutional Review Board Statement

The study protocol was reviewed and approved by the Research Ethics Commit-

tee of the Faculty of Health Sciences of the University of Brasília, DF, Brazil, under the number CAE: 91375218.9.0000.0030.

Informed Consent Statement

Informed consent was obtained from all subjects involved in the study.

Data Availability Statement

Data are contained within the article.

Conflicts of Interest

The authors declare no conflicts of interest regarding the publication of this paper.

References

- [1] Brunoni, A., Nitsche, M.A. and Loo, C. (2016) Transcranial Direct Current Stimulation in Neuropsychiatric: Clinical Principles and Management. Springer Nature.
- [2] Doruk, D., Gray, Z., Bravo, G.L., Pascual-Leone, A. and Fregni, F. (2014) Effects of tDCS on Executive Function in Parkinson's Disease. *Neuroscience Letters*, **582**, 27-31. <https://doi.org/10.1016/j.neulet.2014.08.043>
- [3] Broeder, S., Nackaerts, E., Heremans, E., Vervoort, G., Meesen, R., Verheyden, G., *et al.* (2015) Transcranial Direct Current Stimulation in Parkinson's Disease: Neurophysiological Mechanisms and Behavioral Effects. *Neuroscience & Biobehavioral Reviews*, **57**, 105-117. <https://doi.org/10.1016/j.neubiorev.2015.08.010>
- [4] Tysnes, O. and Storstein, A. (2017) Epidemiology of Parkinson's Disease. *Journal of Neural Transmission*, **124**, 901-905. <https://doi.org/10.1007/s00702-017-1686-y>
- [5] Bhatia, K.P., Chaudhuri, K.R. and Stamelou, M. (2016) Parkinson's Disease. *International Review of Neurobiology*, **132**, 122-146.
- [6] Braak, H., Braak, E., Yilmazer, D., de Vos, R.A.I., Jansen, E.N.H., Bohl, J., *et al.* (1994) Amygdala Pathology in Parkinson's Disease. *Acta Neuropathologica*, **88**, 493-500. <https://doi.org/10.1007/bf00296485>
- [7] Braak, H. and Del Tredici, K. (2008) Invited Article: Nervous System Pathology in Sporadic Parkinson Disease. *Neurology*, **70**, 1916-1925. <https://doi.org/10.1212/01.wnl.0000312279.49272.9f>
- [8] Martinez-Martin, P., Rodriguez-Blazquez, C., Forjaz, M.J. and Chaudhuri, K.R. (2014) Guide to Assessment Scales in Parkinson's Disease. United Kingdom Springer Healthcare, 14-46.
- [9] Goodarzi, Z., Mrklas, K.J., Roberts, D.J., Jette, N., Pringsheim, T. and Holroyd-Leduc, J. (2016) Detecting Depression in Parkinson Disease. *Neurology*, **87**, 426-437. <https://doi.org/10.1212/wnl.0000000000002898>
- [10] Pagonabarraga, J., Kulisevsky, J., Llebaria, G., García-Sánchez, C., Pascual-Sedano, B. and Gironell, A. (2008) Parkinson's Disease-Cognitive Rating Scale: A New Cognitive Scale Specific for Parkinson's Disease. *Movement Disorders*, **23**, 998-1005. <https://doi.org/10.1002/mds.22007>
- [11] Bettcher, B.M., Mungas, D., Patel, N., Eloffson, J., Dutt, S., Wynn, M., *et al.* (2016) Neuroanatomical Substrates of Executive Functions: Beyond Prefrontal Structures. *Neuropsychologia*, **85**, 100-109.

- <https://doi.org/10.1016/j.neuropsychologia.2016.03.001>
- [12] Kleiner, A.F.R., Pagnussat, A.S., Prisco, G.d., Vagnini, A., Stocchi, F., De Pandis, M.F., *et al.* (2017) Analyzing Gait Variability and Dual-Task Interference in Patients with Parkinson's Disease and Freezing by Means of the Word-Color Stroop Test. *Aging Clinical and Experimental Research*, **30**, 1137-1142. <https://doi.org/10.1007/s40520-017-0862-0>
- [13] Langston, R.G. and Virmani, T. (2018) Use of a Modified STROOP Test to Assess Color Discrimination Deficit in Parkinson's Disease. *Frontiers in Neurology*, **9**, Article No. 765. <https://doi.org/10.3389/fneur.2018.00765>
- [14] Ishikuro, K., Dougu, N., Nukui, T., Yamamoto, M., Nakatsuji, Y., Kuroda, S., *et al.* (2018) Effects of Transcranial Direct Current Stimulation (tDCS) over the Frontal Polar Area on Motor and Executive Functions in Parkinson's Disease; a Pilot Study. *Frontiers in Aging Neuroscience*, **10**, Article No. 231. <https://doi.org/10.3389/fnagi.2018.00231>
- [15] Yotnuengnit, P., Bhidayasiri, R., Donkhan, R., Chaluaysrimuang, J. and Piravej, K. (2018) Effects of Transcranial Direct Current Stimulation plus Physical Therapy on Gait in Patients with Parkinson Disease: A Randomized Controlled Trial. *American Journal of Physical Medicine & Rehabilitation*, **97**, 7-15. <https://doi.org/10.1097/phm.0000000000000783>
- [16] Forogh, B., Rafiei, M., Arbabi, A., Motamed, M.R., Madani, S.P. and Sajadi, S. (2016) Repeated Sessions of Transcranial Direct Current Stimulation Evaluation on Fatigue and Daytime Sleepiness in Parkinson's Disease. *Neurological Sciences*, **38**, 249-254. <https://doi.org/10.1007/s10072-016-2748-x>
- [17] Benussi, A., Alberici, A., Cantoni, V., Manenti, R., Brambilla, M., Dell'Era, V., *et al.* (2017) Modulating Risky Decision-Making in Parkinson's Disease by Transcranial Direct Current Stimulation. *European Journal of Neurology*, **24**, 751-754. <https://doi.org/10.1111/ene.13286>
- [18] Lawrence, B.J., Gasson, N., Johnson, A.R., Booth, L. and Loftus, A.M. (2018) Cognitive Training and Transcranial Direct Current Stimulation for Mild Cognitive Impairment in Parkinson's Disease: A Randomized Controlled Trial. *Parkinson's Disease*, **2018**, Article ID: 4318475. <https://doi.org/10.1155/2018/4318475>
- [19] Manenti, R., Brambilla, M., Rosini, S., Orizio, I., Ferrari, C., Borroni, B., *et al.* (2014) Time up and Go Task Performance Improves after Transcranial Direct Current Stimulation in Patient Affected by Parkinson's Disease. *Neuroscience Letters*, **580**, 74-77. <https://doi.org/10.1016/j.neulet.2014.07.052>
- [20] Boggio, P.S., Ferrucci, R., Rigonatti, S.P., Covre, P., Nitsche, M., Pascual-Leone, A., *et al.* (2006) Effects of Transcranial Direct Current Stimulation on Working Memory in Patients with Parkinson's Disease. *Journal of the Neurological Sciences*, **249**, 31-38. <https://doi.org/10.1016/j.jns.2006.05.062>
- [21] Benninger, D.H., Lomarev, M., Lopez, G., Wassermann, E.M., Li, X., Considine, E., *et al.* (2010) Transcranial Direct Current Stimulation for the Treatment of Parkinson's Disease. *Journal of Neurology, Neurosurgery & Psychiatry*, **81**, 1105-1111. <https://doi.org/10.1136/jnnp.2009.202556>
- [22] Goetz, C.G., Tilley, B.C., Shaftman, S.R., Stebbins, G.T., Fahn, S., Martinez-Martin, P., *et al.* (2008) Movement Disorder Society-Sponsored Revision of the Unified Parkinson's Disease Rating Scale (MDS-UPDRS): Scale Presentation and Clinimetric Testing Results. *Movement Disorders*, **23**, 2129-2170. <https://doi.org/10.1002/mds.22340>
- [23] Walter, U., Kleinschmidt, S., Rimmele, F., Wunderlich, C., Gemende, I., Benecke,

- R., *et al.* (2013) Potential Impact of Self-Perceived Prodromal Symptoms on the Early Diagnosis of Parkinson's Disease. *Journal of Neurology*, **260**, 3077-3085. <https://doi.org/10.1007/s00415-013-7125-6>
- [24] Skorvanek, M., Martinez-Martin, P., Kovacs, N., Rodriguez-Violante, M., Corvol, J., Taba, P., *et al.* (2017) Differences in MDS-UPDRS Scores Based on Hoehn and Yahr Stage and Disease Duration. *Movement Disorders Clinical Practice*, **4**, 536-544. <https://doi.org/10.1002/mdc3.12476>
- [25] Zigmond, A.S. and Snaith, R.P. (1983) The Hospital Anxiety and Depression Scale. *Acta Psychiatrica Scandinavica*, **67**, 361-370. <https://doi.org/10.1111/j.1600-0447.1983.tb09716.x>
- [26] MacLeod, C.M. (1991) John Ridley Stroop: Creator of a Landmark Cognitive Task. *Canadian Psychology*, **32**, 521-524. <https://doi.org/10.1037/h0079012>
- [27] Bear, M.F., *et al.* (2016) Neuroscience: Exploring the Brain. 4th Edition, Wolters Kluwer.
- [28] Fregni, F., Boggio, P.S., Nitsche, M.A., Marcolin, M.A., Rigonatti, S.P. and Pascual-Leone, A. (2006) Treatment of Major Depression with Transcranial Direct Current Stimulation. *Bipolar Disorders*, **8**, 203-204. <https://doi.org/10.1111/j.1399-5618.2006.00291.x>
- [29] Raimundo, R.J.S., Uribe, C.E. and Brasil-Neto, J.P. (2012) Lack of Clinically Detectable Acute Changes on Autonomic or Thermoregulatory Functions in Healthy Subjects after Transcranial Direct Current Stimulation (tDCS). *Brain Stimulation*, **5**, 196-200. <https://doi.org/10.1016/j.brs.2011.03.009>
- [30] Chang, W.H., Kim, M.S., Park, E., Cho, J.W., Youn, J., Kim, Y.K., *et al.* (2017) Effect of Dual-Mode and Dual-Site Noninvasive Brain Stimulation on Freezing of Gait in Patients with Parkinson Disease. *Archives of Physical Medicine and Rehabilitation*, **98**, 1283-1290. <https://doi.org/10.1016/j.apmr.2017.01.011>
- [31] Swank, C., Mehta, J. and Criminger, C. (2016) Transcranial Direct Current Stimulation Lessens Dual Task Cost in People with Parkinson's Disease. *Neuroscience Letters*, **626**, 1-5. <https://doi.org/10.1016/j.neulet.2016.05.010>
- [32] Valentino, F., Cosentino, G., Brighina, F., Pozzi, N.G., Sandrini, G., Fierro, B., *et al.* (2014) Transcranial Direct Current Stimulation for Treatment of Freezing of Gait: A Cross-Over Study. *Movement Disorders*, **29**, 1064-1069. <https://doi.org/10.1002/mds.25897>
- [33] Kaski, D., Dominguez, R., Allum, J., Islam, A. and Bronstein, A. (2014) Combining Physical Training with Transcranial Direct Current Stimulation to Improve Gait in Parkinson's Disease: A Pilot Randomized Controlled Study. *Clinical Rehabilitation*, **28**, 1115-1124. <https://doi.org/10.1177/0269215514534277>
- [34] Goldman, J.G. and Litvan, I. (2011) Mild Cognitive Impairment in Parkinson's Disease. *Minerva Medica*, **102**, 441-459.
- [35] Brunoni, A.R. (2017) Princípios da prática do uso da neuromodulação não invasiva em psiquiatria. Artmed.
- [36] Miniussi, C., Paulus, W. and Rossini, P.M. (2013) Transcranial Brain Stimulation. Taylor & Francis Group LLC, 56-69.
- [37] Nitsche, M.A., Cohen, L.G., Wassermann, E.M., Priori, A., Lang, N., Antal, A., *et al.* (2008) Transcranial Direct Current Stimulation: State of the Art 2008. *Brain Stimulation*, **1**, 206-223. <https://doi.org/10.1016/j.brs.2008.06.004>
- [38] Hadoush, H., Al-Sharman, A., Khalil, H., Banihani, S.A. and Al-Jarrah, M. (2018) Sleep Quality, Depression, and Quality of Life after Bilateral Anodal Transcranial

- Direct Current Stimulation in Patients with Parkinson's Disease. *Medical Science Monitor Basic Research*, **24**, 198-205. <https://doi.org/10.12659/msmbr.911411>
- [39] Pereira, J.B., Junqué, C., Bartrés-Faz, D., Martí, M.J., Sala-Llonch, R., Compta, Y., *et al.* (2013) Modulation of Verbal Fluency Networks by Transcranial Direct Current Stimulation (tDCS) in Parkinson's Disease. *Brain Stimulation*, **6**, 16-24. <https://doi.org/10.1016/j.brs.2012.01.006>
- [40] Dinkelbach, L., Brambilla, M., Manenti, R. and Brem, A. (2017) Non-Invasive Brain Stimulation in Parkinson's Disease: Exploiting Crossroads of Cognition and Mood. *Neuroscience & Biobehavioral Reviews*, **75**, 407-418. <https://doi.org/10.1016/j.neubiorev.2017.01.021>
- [41] Ferrucci, R., Bocci, T., Cortese, F., Ruggiero, F. and Priori, A. (2016) Cerebellar Transcranial Direct Current Stimulation in Neurological Disease. *Cerebellum & Ataxias*, **3**, Article No. 16. <https://doi.org/10.1186/s40673-016-0054-2>
- [42] Liebetanz, D. (2002) Pharmacological Approach to the Mechanisms of Transcranial Dc-Stimulation-Induced After-Effects of Human Motor Cortex Excitability. *Brain*, **125**, 2238-2247. <https://doi.org/10.1093/brain/awf238>
- [43] Nitsche, M.A., Fricke, K., Henschke, U., Schlitterlau, A., Liebetanz, D., Lang, N., *et al.* (2003) Pharmacological Modulation of Cortical Excitability Shifts Induced by Transcranial Direct Current Stimulation in Humans. *The Journal of Physiology*, **553**, 293-301. <https://doi.org/10.1113/jphysiol.2003.049916>
- [44] Xu, J. and Sastry, B.R. (2005) Benzodiazepine Involvement in LTP of the Gaba-Ergic IPSC in Rat Hippocampal CA1 Neurons. *Brain Research*, **1062**, 134-143. <https://doi.org/10.1016/j.brainres.2005.09.008>